

For Research Use Only

SLC7A11/xCT Recombinant Matched Antibody Pair, PBS Only



Catalog Number:MP03119-1

Capture Antibody Information

Catalog Number:
82115-3-PBS
Host:
Rabbit
Isotype:
IgG
Purification Method:
Protein A purification

Clone ID:
252789G7
Reactivity:
human, mouse
GenBank:
BC012087
Immunogen Catalog Number:
Ag25431

Conjugate:
Unconjugated
Full name:
solute carrier family 7, (cationic amino acid transporter, y+ system) member 11
Gene ID:
23657

Detection Antibody Information

Catalog Number:
82115-4-PBS
Host:
Rabbit
Isotype:
IgG
Purification Method:
Protein A purification

Clone ID:
252789C8
Reactivity:
human
GenBank:
BC012087
Immunogen Catalog Number:
Ag25431

Conjugate:
Unconjugated
Full name:
solute carrier family 7, (cationic amino acid transporter, y+ system) member 11
Gene ID:
23657

Applications

Tested Applications:
Sandwich ELISA

Range:
195-6250 pg/mL (Sandwich ELISA)

Recommended Dilutions:
It is recommended that this reagent should be titrated in each testing system to obtain optimal results.

Product Information

MP03119-1 targets SLC7A11/xCT in immunoassays as a matched antibody pair. Validated in Sandwich ELISA.

Capture antibody: SLC7A11/xCT Recombinant monoclonal antibody, PBS Only (Capture) 82115-3-PBS (252789G7). 100 µg. Concentration 1 mg/mL.

Detection antibody: SLC7A11 Recombinant monoclonal antibody, PBS Only (Detector) 82115-4-PBS (252789C8). 100 µg. Concentration 1 mg/mL.

Unconjugated rabbit recombinant monoclonal antibody pair in PBS only storage buffer at a concentration of 1 mg/mL, ready for conjugation. Created using Proteintech's proprietary in-house recombinant technology. Recombinant production enables unrivalled batch-to-batch consistency, easy scale-up, and future security of supply.

Matched antibody pairs are designed for use in a variety of assays and platforms that require matched antibody pairs.

Antibody use should be optimized for each application and assay.

Storage

Storage:
Store at -80°C.
The product is shipped with ice packs. Upon receipt, store it immediately at -80°C
Storage buffer:
PBS only

For technical support and original validation data for this product please contact:

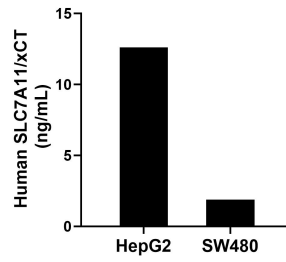
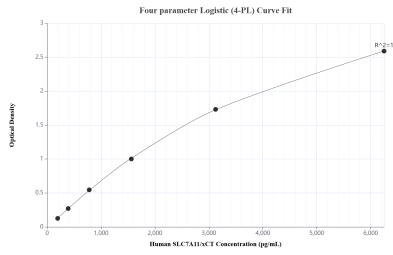
T: 4006900926

E: Proteintech-CN@ptglab.com

W: ptgcn.com

This product is exclusively available under Proteintech Group brand and is not available to purchase from any other manufacturer.

Selected Validation Data



Sandwich ELISA standard curve of MP03119-1, Human SLC7A11/xCT Recombinant Matched Antibody Pair - PBS only. 82115-3-PBS was coated to a plate as the capture antibody and incubated with serial dilutions of standard Ag25431. 82115-4-PBS was HRP conjugated as the detection antibody. Range: 195-6250 pg/mL

The mean SLC7A11/xCT concentration was determined to be 12.6 ng/mL in HepG2 cell extract based on a 1.2 mg/mL extract load and 1.9 ng/mL in SW480 cell extract based on a 3.0 mg/mL extract load.