

For Research Use Only

SIX6OS1 Recombinant Matched Antibody Pair, PBS Only



Catalog Number:MP03116-1

Capture Antibody Information

Catalog Number:
87498-3-PBS

Host:
Rabbit

Isotype:
IgG

Purification Method:
Protein A purification

Clone ID:
252891D6

Reactivity:
human

GenBank:
BC125070

Immunogen Catalog Number:
Ag33548

Conjugate:
Unconjugated

Full name:
chromosome 14 open reading frame
39

Gene ID:
317761

Detection Antibody Information

Catalog Number:
87498-2-PBS

Host:
Rabbit

Isotype:
IgG

Purification Method:
Protein A purification

Clone ID:
252892E8

Reactivity:
human

GenBank:
BC125070

Immunogen Catalog Number:
Ag33548

Conjugate:
Unconjugated

Full name:
chromosome 14 open reading frame
39

Gene ID:
317761

Applications

Tested Applications:
Cytometric bead array

Range:
0.625-80 ng/mL (Cytometric Bead
Array)

Recommended Dilutions:
It is recommended that this reagent
should be titrated in each testing
system to obtain optimal results.

Product Information

MP03116-1 targets SIX6OS1 in immunoassays as a matched antibody pair. Validated in Cytometric bead array.

Capture antibody: C14orf39 Recombinant monoclonal antibody, PBS Only (Capture) 87498-3-PBS (252891D6). 100 μ g. Concentration 1 mg/ml.

Detection antibody: C14orf39 Recombinant monoclonal antibody, PBS Only (Detector) 87498-2-PBS (252892E8). 100 μ g. Concentration 1 mg/ml.

Unconjugated rabbit recombinant monoclonal antibody pair in PBS only storage buffer at a concentration of 1 mg/mL, ready for conjugation. Created using Proteintech's proprietary in-house recombinant technology. Recombinant production enables unrivalled batch-to-batch consistency, easy scale-up, and future security of supply.

Matched antibody pairs are designed for use in a variety of assays and platforms that require matched antibody pairs.

Antibody use should be optimized for each application and assay.

Storage

Storage:
Store at -80°C.

The product is shipped with ice packs. Upon receipt, store it immediately at -80°C

Storage buffer:
PBS only

For technical support and original validation data for this product please contact:

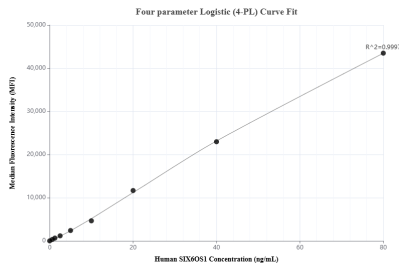
T: 4006900926

E: Proteintech-CN@ptglab.com

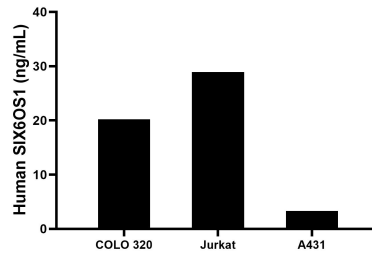
W: ptgcn.com

This product is exclusively available under Proteintech Group brand and is not available to purchase from any other manufacturer.

Selected Validation Data



Cytometric bead array standard curve of MP03116-1, SIX60S1 Recombinant Matched Antibody Pair, PBS Only. Capture antibody: 87498-3-PBS. Detection antibody: 87498-2-PBS. Standard: Ag33548. Range: 0.625-80 ng/mL.



The mean SIX60S1 concentration was determined to be 20.2 ng/mL in COLO 320 cell extract based on a 1.2 mg/mL extract load, 28.9 ng/mL in Jurkat cell extract based on a 1.2 mg/mL extract load, 3.3 ng/mL in A431 cell extract based on a 1.2 mg/mL extract load.