

For Research Use Only

# CREBBP Recombinant Matched Antibody Pair, PBS Only



Catalog Number:MP03100-1

## Capture Antibody Information

Catalog Number:

86481-4-PBS

Host:

Rabbit

Isotype:

IgG

Purification Method:

Protein A purification

Clone ID:

253020C4

Reactivity:

human

GenBank:

NM\_001079846

Immunogen Catalog Number:

Ag27489

Conjugate:

Unconjugated

Full name:

CREB binding protein

Gene ID:

1387

## Detection Antibody Information

Catalog Number:

86481-3-PBS

Host:

Rabbit

Isotype:

IgG

Purification Method:

Protein A purification

Clone ID:

253020C1

Reactivity:

human

GenBank:

NM\_001079846

Immunogen Catalog Number:

Ag27489

Conjugate:

Unconjugated

Full name:

CREB binding protein

Gene ID:

1387

## Applications

Tested Applications:

Cytometric bead array

Range:

0.156-20 ng/mL (Cytometric Bead Array)

Recommended Dilutions:

It is recommended that this reagent should be titrated in each testing system to obtain optimal results.

## Product Information

MP03100-1 targets CREBBP in immunoassays as a matched antibody pair. Validated in Cytometric bead array.

Capture antibody: CREBBP Recombinant monoclonal antibody, PBS Only (Capture) 86481-4-PBS (253020C4). 100  $\mu$ g. Concentration 1 mg/mL.

Detection antibody: CREBBP Recombinant monoclonal antibody, PBS Only (Detector) 86481-3-PBS (253020C1). 100  $\mu$ g. Concentration 1 mg/mL.

Unconjugated rabbit recombinant monoclonal antibody pair in PBS only storage buffer at a concentration of 1 mg/mL, ready for conjugation. Created using Proteintech's proprietary in-house recombinant technology. Recombinant production enables unrivalled batch-to-batch consistency, easy scale-up, and future security of supply.

Matched antibody pairs are designed for use in a variety of assays and platforms that require matched antibody pairs.

Antibody use should be optimized for each application and assay.

## Storage

Storage:

Store at -80°C.

The product is shipped with ice packs. Upon receipt, store it immediately at -80°C

Storage buffer:

PBS only

For technical support and original validation data for this product please contact:

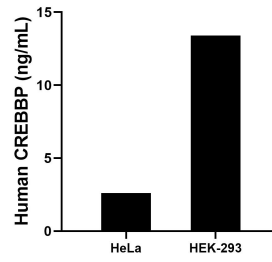
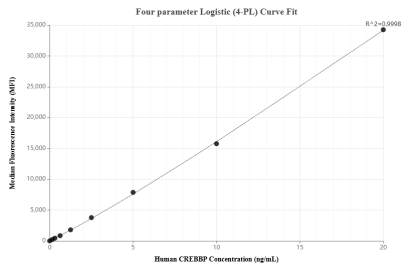
T: 4006900926

E: Proteintech-CN@ptglab.com

W: ptgcn.com

This product is exclusively available under Proteintech Group brand and is not available to purchase from any other manufacturer.

## Selected Validation Data



Cytometric bead array standard curve of MP03100-1, CREBBP Recombinant Matched Antibody Pair, PBS Only. Capture antibody: 86481-4-PBS. Detection antibody: 86481-3-PBS. Standard: Ag27489. Range: 0.156-20 ng/mL

The mean CREBBP concentration was determined to be 2.6 ng/mL in HeLa cell extract based on a 1.2 mg/mL extract load, 13.4 ng/mL in HEK-2993 cell extract based on a 3.2 mg/mL extract load.