

For Research Use Only

# CDHR5 Recombinant Matched Antibody Pair, PBS Only



Catalog Number:MP03089-1

## Capture Antibody Information

Catalog Number:  
87608-2-PBS

Host:  
Rabbit

Isotype:  
IgG

Purification Method:  
Protein A purification

Clone ID:  
252533D12

Reactivity:  
human

GenBank:  
NM\_021924.5

Immunogen Catalog Number:  
Eg5775

Conjugate:  
Unconjugated

Full name:  
mucin-like protocadherin

Gene ID:  
53841

## Detection Antibody Information

Catalog Number:  
87608-1-PBS

Host:  
Rabbit

Isotype:  
IgG

Purification Method:  
Protein A purification

Clone ID:  
252533F4

Reactivity:  
human

GenBank:  
NM\_021924.5

Immunogen Catalog Number:  
Eg5775

Conjugate:  
Unconjugated

Full name:  
mucin-like protocadherin

Gene ID:  
53841

## Applications

Tested Applications:  
Sandwich ELISA

Range:  
39.1-2500 pg/mL (Sandwich ELISA)

Recommended Dilutions:  
It is recommended that this reagent should be titrated in each testing system to obtain optimal results.

## Product Information

MP03089-1 targets CDHR5 in immunoassays as a matched antibody pair. Validated in Sandwich ELISA.

Capture antibody: CDHR5 Recombinant monoclonal antibody, PBS Only (Capture) 87608-2-PBS (252533D12). 100  $\mu$ g. Concentration 1 mg/mL.

Detection antibody: CDHR5 Recombinant monoclonal antibody, PBS Only (Detector) 87608-1-PBS (252533F4). 100  $\mu$ g. Concentration 1 mg/mL.

Unconjugated rabbit recombinant monoclonal antibody pair in PBS only storage buffer at a concentration of 1 mg/mL, ready for conjugation. Created using Proteintech's proprietary in-house recombinant technology. Recombinant production enables unrivalled batch-to-batch consistency, easy scale-up, and future security of supply.

Matched antibody pairs are designed for use in a variety of assays and platforms that require matched antibody pairs.

Antibody use should be optimized for each application and assay.

## Storage

Storage:

Store at -80°C.

The product is shipped with ice packs. Upon receipt, store it immediately at -80°C

Storage buffer:

PBS only

For technical support and original validation data for this product please contact:

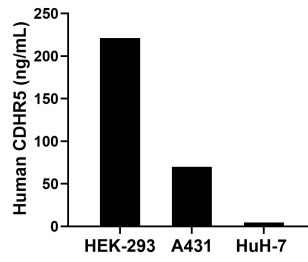
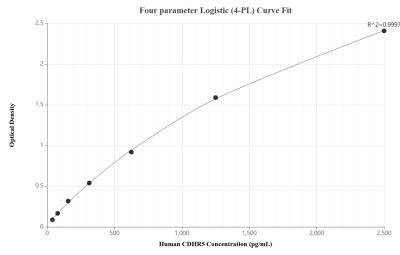
T: 4006900926

E: Proteintech-CN@ptglab.com

W: ptgcn.com

This product is exclusively available under Proteintech Group brand and is not available to purchase from any other manufacturer.

## Selected Validation Data



Sandwich ELISA standard curve of MP03089-1, Human CDHR5 Recombinant Matched Antibody Pair - PBS only. 87608-2-PBS was coated to a plate as the capture antibody and incubated with serial dilutions of standard Eg5775. 87608-1-PBS was HRP conjugated as the detection antibody. Range: 39.1-2500 pg/mL

The mean CDHR5 concentration was determined to be 220.9 ng/mL in HEK-293 cell extract based on a 1.2 mg/mL extract load, 69.7 ng/mL in A431 cell extract based on a 1.2 mg/mL extract load and 4.5 ng/mL in HuH-7 cell extract based on a 1.2 mg/mL extract load.