

EPHA2 Recombinant Matched Antibody Pair, PBS Only

Catalog Number:MP03086-1

Capture Antibody Information

Catalog Number:
87562-3-PBS
Host:
Rabbit
Isotype:
IgG
Purification Method:
Protein A purification

Clone ID:
252900A10
Reactivity:
human
GenBank:
BC037166
Immunogen Catalog Number:
Eg0146

Conjugate:
Unconjugated
Full name:
EPH receptor A2
Gene ID:
1969

Detection Antibody Information

Catalog Number:
87562-2-PBS
Host:
Rabbit
Isotype:
IgG
Purification Method:
Protein A purification

Clone ID:
252900G3
Reactivity:
human
GenBank:
BC037166
Immunogen Catalog Number:
Eg0146

Conjugate:
Unconjugated
Full name:
EPH receptor A2
Gene ID:
1969

Applications

Tested Applications:
Cytometric bead array, Sandwich ELISA

Range:
0.156-20 ng/mL (Cytometric Bead Array)
78.1-2500 pg/mL (Sandwich ELISA)

Recommended Dilutions:
It is recommended that this reagent should be titrated in each testing system to obtain optimal results.

Product Information

MP03086-1 targets EPHA2 in immunoassays as a matched antibody pair. Validated in Cytometric bead array, Sandwich ELISA.

Capture antibody: EPHA2 Recombinant monoclonal antibody, PBS Only (Capture) 87562-3-PBS (252900A10). 100 µg. Concentration 1 mg/ml.

Detection antibody: EPHA2 Recombinant monoclonal antibody, PBS Only (Detector) 87562-2-PBS (252900G3). 100 µg. Concentration 1 mg/ml.

Unconjugated rabbit recombinant monoclonal antibody pair in PBS only storage buffer at a concentration of 1 mg/mL, ready for conjugation. Created using Proteintech's proprietary in-house recombinant technology. Recombinant production enables unrivalled batch-to-batch consistency, easy scale-up, and future security of supply.

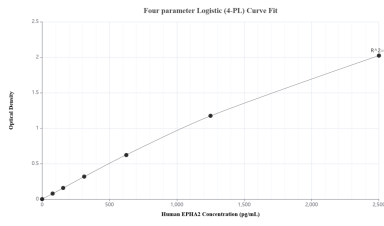
Matched antibody pairs are designed for use in a variety of assays and platforms that require matched antibody pairs.

Antibody use should be optimized for each application and assay.

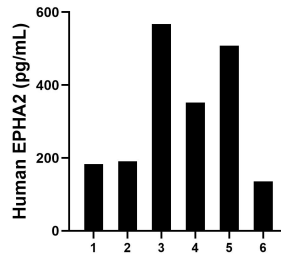
Storage

Storage:
Store at -80°C.
The product is shipped with ice packs. Upon receipt, store it immediately at -80°C
Storage buffer:
PBS only

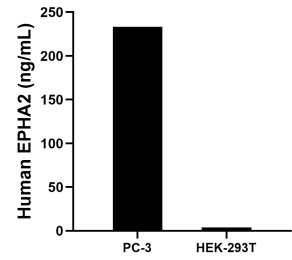
Selected Validation Data



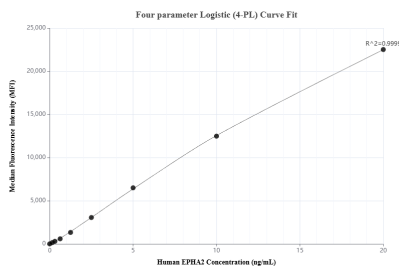
Sandwich ELISA standard curve of MP03086-1, Human EPHA2 Recombinant Matched Antibody Pair - PBS only. 87562-3-PBS was coated to a plate as the capture antibody and incubated with serial dilutions of standard Eg0146. 87562-2-PBS was HRP conjugated as the detection antibody. Range: 78.1-2500 pg/mL



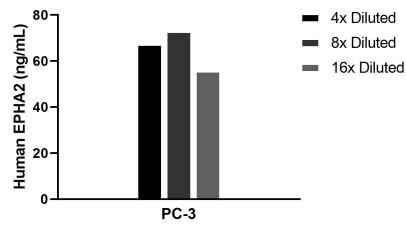
Plasma of six individual healthy human donors was measured. The EPHA2 concentration of detected samples was determined to be 322.9 pg/mL with a range of 135.9-567.2 pg/mL.



The mean EPHA2 concentration was determined to be 233.1 ng/mL in PC-3 cell extract based on a 1.5 mg/mL extract load and 4.0 ng/mL in HEK-293T cell extract based on a 1.2 mg/mL extract load.



Cytometric bead array standard curve of MP03086-1, EPHA2 Recombinant Matched Antibody Pair, PBS Only. Capture antibody: 87562-3-PBS. Detection antibody: 87562-2-PBS. Standard: Eg0146. Range: 0.156-20 ng/mL



The mean EPHA2 concentration was determined to be 65.4 ng/mL in PC-3 cell extract based on a 1.2 mg/mL extract load.