

For Research Use Only

Rat CXCL16 Recombinant Matched Antibody Pair, PBS Only



Catalog Number:MP03078-1

Capture Antibody Information

Catalog Number:
87605-2-PBS
Host:
Rabbit
Isotype:
IgG
Purification Method:
Protein A purification

Clone ID:
252531G2
Reactivity:
rat
GenBank:
NM_001017478.1
Immunogen Catalog Number:
Eg6251

Conjugate:
Unconjugated
Full name:
chemokine (C-X-C motif) ligand 16
Gene ID:
497942

Detection Antibody Information

Catalog Number:
87605-1-PBS
Host:
Rabbit
Isotype:
IgG
Purification Method:
Protein A purification

Clone ID:
252531D1
Reactivity:
rat
GenBank:
NM_001017478.1
Immunogen Catalog Number:
Eg6251

Conjugate:
Unconjugated
Full name:
chemokine (C-X-C motif) ligand 16
Gene ID:
497942

Applications

Tested Applications:
Cytometric bead array

Range:
0.078-10 ng/mL (Cytometric Bead Array)

Recommended Dilutions:
It is recommended that this reagent should be titrated in each testing system to obtain optimal results.

Product Information

MP03078-1 targets CXCL16 in immunoassays as a matched antibody pair. Validated in Cytometric bead array.

Capture antibody: Rat CXCL16 Recombinant monoclonal antibody, PBS Only (Capture) 87605-2-PBS (252531G2). 100 μ g. Concentration 1 mg/mL.

Detection antibody: Rat CXCL16 Recombinant monoclonal antibody, PBS Only (Detector) 87605-1-PBS (252531D1). 100 μ g. Concentration 1 mg/mL.

Unconjugated rabbit recombinant monoclonal antibody pair in PBS only storage buffer at a concentration of 1 mg/mL, ready for conjugation. Created using Proteintech's proprietary in-house recombinant technology. Recombinant production enables unrivalled batch-to-batch consistency, easy scale-up, and future security of supply.

Matched antibody pairs are designed for use in a variety of assays and platforms that require matched antibody pairs.

Antibody use should be optimized for each application and assay.

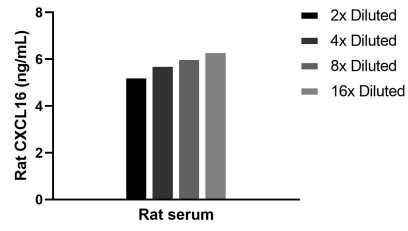
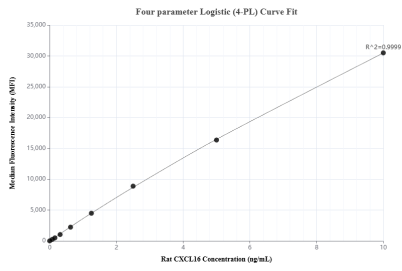
Storage

Storage:
Store at -80°C.
The product is shipped with ice packs. Upon receipt, store it immediately at -80°C
Storage buffer:
PBS only

For technical support and original validation data for this product please contact:
T: 4006900926 E: Proteintech-CN@ptglab.com W: ptgcn.com

This product is exclusively available under Proteintech Group brand and is not available to purchase from any other manufacturer.

Selected Validation Data



Cytometric bead array standard curve of MP03078-1, RAT CXCL16 Recombinant Matched Antibody Pair, PBS Only. Capture antibody: 87605-2-PBS. Detection antibody: 87605-1-PBS. Standard: Eg6251. Range: 0.078-10 ng/mL.

The mean CXCL16 concentration was determined to be 5.9 ng/mL in rat serum.