

For Research Use Only

Mouse PTPRD Recombinant Matched Antibody Pair, PBS Only



Catalog Number:MP03070-1

Capture Antibody Information

Catalog Number:
87472-4-PBS
Host:
Rabbit
Isotype:
IgG
Purification Method:
Protein A purification

Clone ID:
252819C7
Reactivity:
mouse
GenBank:
/
Immunogen Catalog Number:
Eg6916

Conjugate:
Unconjugated
Full name:
protein tyrosine phosphatase, receptor type, D
Gene ID:
19266

Detection Antibody Information

Catalog Number:
87472-3-PBS
Host:
Rabbit
Isotype:
IgG
Purification Method:
Protein A purification

Clone ID:
252819H1
Reactivity:
mouse
GenBank:
/
Immunogen Catalog Number:
Eg6916

Conjugate:
Unconjugated
Full name:
protein tyrosine phosphatase, receptor type, D
Gene ID:
19266

Applications

Tested Applications:
Cytometric bead array

Range:
0.781-50 ng/mL (Cytometric Bead Array)

Recommended Dilutions:
It is recommended that this reagent should be titrated in each testing system to obtain optimal results.

Product Information

MP03070-1 targets PTPRD in immunoassays as a matched antibody pair. Validated in Cytometric bead array.

Capture antibody: Mouse PTPRD Recombinant monoclonal antibody, PBS Only (Capture) 87472-4-PBS (252819C7). 100 µg. Concentration 1 mg/mL.

Detection antibody: Mouse PTPRD Recombinant monoclonal antibody, PBS Only (Detector) 87472-3-PBS (252819H1). 100 µg. Concentration 1 mg/mL.

Unconjugated rabbit recombinant monoclonal antibody pair in PBS only storage buffer at a concentration of 1 mg/mL, ready for conjugation. Created using Proteintech's proprietary in-house recombinant technology. Recombinant production enables unrivalled batch-to-batch consistency, easy scale-up, and future security of supply.

Matched antibody pairs are designed for use in a variety of assays and platforms that require matched antibody pairs.

Antibody use should be optimized for each application and assay.

Storage

Storage:
Store at -80°C.
The product is shipped with ice packs. Upon receipt, store it immediately at -80°C
Storage buffer:
PBS only

For technical support and original validation data for this product please contact:

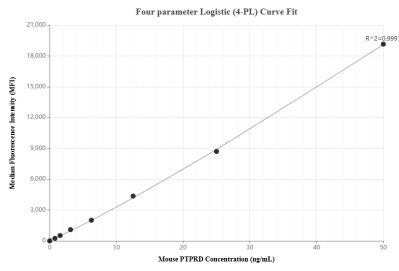
T: 4006900926

E: Proteintech-CN@ptglab.com

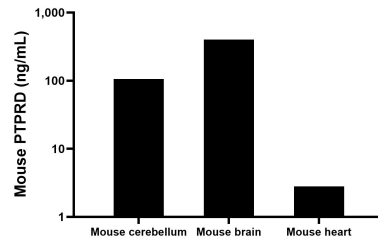
W: ptgcn.com

This product is exclusively available under Proteintech Group brand and is not available to purchase from any other manufacturer.

Selected Validation Data



Cytometric bead array standard curve of MP03070-1, MOUSE PTPRD Recombinant Matched Antibody Pair, PBS Only. Capture antibody: 87472-4-PBS. Detection antibody: 87472-3-PBS. Standard: Eg6916. Range: 0.781-50 ng/mL



The mean PTPRD concentration was determined to be 105.6 ng/mL in mouse cerebellum tissue extract based on a 6.0 mg/mL extract load, 402.8 ng/mL in mouse brain tissue extract based on a 3.2 mg/mL extract load, 2.8 ng/mL in mouse heart tissue extract based on a 5.4 mg/mL extract load.