

For Research Use Only

GAS6 Recombinant Matched Antibody Pair, PBS Only



Catalog Number:MP03067-1

Capture Antibody Information

Catalog Number:
87249-3-PBS

Host:
Rabbit

Isotype:
IgG

Purification Method:
Protein A purification

Clone ID:
252407C10

Reactivity:
human

GenBank:
NM_000820.3

Immunogen Catalog Number:
Eg4871

Conjugate:
Unconjugated

Full name:
growth arrest-specific 6

Gene ID:
2621

Detection Antibody Information

Catalog Number:
87249-2-PBS

Host:
Rabbit

Isotype:
IgG

Purification Method:
Protein A purification

Clone ID:
252407A10

Reactivity:
human

GenBank:
NM_000820.3

Immunogen Catalog Number:
Eg4871

Conjugate:
Unconjugated

Full name:
growth arrest-specific 6

Gene ID:
2621

Applications

Tested Applications:
Sandwich ELISA

Range:
78.1-5000 pg/mL (Sandwich ELISA)

Recommended Dilutions:
It is recommended that this reagent should be titrated in each testing system to obtain optimal results.

Product Information

MP03067-1 targets GAS6 in immunoassays as a matched antibody pair. Validated in Sandwich ELISA.

Capture antibody: GAS6 Recombinant monoclonal antibody, PBS Only (Capture) 87249-3-PBS (252407C10). 100 μ g. Concentration 1 mg/mL.

Detection antibody: GAS6 Recombinant monoclonal antibody, PBS Only (Detector) 87249-2-PBS (252407A10). 100 μ g. Concentration 1 mg/mL.

Unconjugated rabbit recombinant monoclonal antibody pair in PBS only storage buffer at a concentration of 1 mg/mL, ready for conjugation. Created using Proteintech's proprietary in-house recombinant technology. Recombinant production enables unrivalled batch-to-batch consistency, easy scale-up, and future security of supply.

Matched antibody pairs are designed for use in a variety of assays and platforms that require matched antibody pairs.

Antibody use should be optimized for each application and assay.

Storage

Storage:
Store at -80°C.

The product is shipped with ice packs. Upon receipt, store it immediately at -80°C

Storage buffer:
PBS only

For technical support and original validation data for this product please contact:

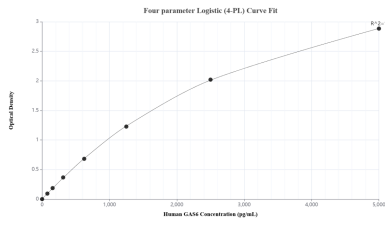
T: 4006900926

E: Proteintech-CN@ptglab.com

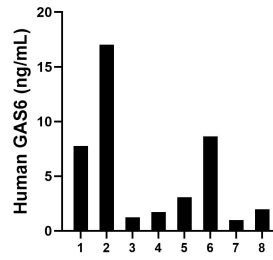
W: ptgcn.com

This product is exclusively available under Proteintech Group brand and is not available to purchase from any other manufacturer.

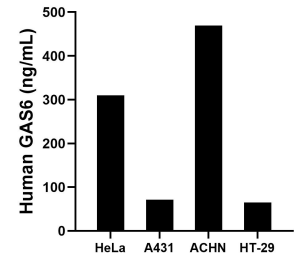
Selected Validation Data



Sandwich ELISA standard curve of MP03067-1, Human GAS6 Recombinant Matched Antibody Pair - PBS only. 87249-3-PBS was coated to a plate as the capture antibody and incubated with serial dilutions of standard Eg4871. 87249-2-PBS was HRP conjugated as the detection antibody. Range: 78.1-5000 pg/mL



Plasma of eight individual healthy human donors was measured. The GAS6 concentration of detected samples was determined to be 6.6 ng/mL with a range of 1.3-17.0 ng/mL.



The mean GAS6 concentration was determined to be 310.0 ng/mL in HeLa cell extract based on a 1.2 mg/mL extract load, 71.3 ng/mL in A431 cell extract based on a 1.2 mg/mL extract load, 469.1 ng/mL in ACHN cell extract based on a 1.2 mg/mL extract load and 65.3 ng/mL in HT-29 cell extract based on a 1.1 mg/mL extract load.