

For Research Use Only

# Mouse Ly-6A/E (Sca-1) Recombinant Matched Antibody Pair, PBS Only



Catalog Number:MP03064-1

## Capture Antibody Information

**Catalog Number:**  
87403-3-PBS  
**Host:**  
Rabbit  
**Isotype:**  
IgG  
**Purification Method:**  
Protein A purification

**Clone ID:**  
252494D1  
**Reactivity:**  
mouse  
**GenBank:**  
NM\_001271416.1  
**Immunogen Catalog Number:**  
Eg4270

**Conjugate:**  
Unconjugated  
**Full name:**  
lymphocyte antigen 6 complex, locus A  
**Gene ID:**  
110454

## Detection Antibody Information

**Catalog Number:**  
87403-2-PBS  
**Host:**  
Rabbit  
**Isotype:**  
IgG  
**Purification Method:**  
Protein A purification

**Clone ID:**  
252494A2  
**Reactivity:**  
mouse  
**GenBank:**  
NM\_001271416.1  
**Immunogen Catalog Number:**  
Eg4270

**Conjugate:**  
Unconjugated  
**Full name:**  
lymphocyte antigen 6 complex, locus A  
**Gene ID:**  
110454

## Applications

**Tested Applications:**  
Sandwich ELISA

**Range:**  
0.313-20 ng/mL (Sandwich ELISA)

**Recommended Dilutions:**  
It is recommended that this reagent should be titrated in each testing system to obtain optimal results.

## Product Information

MP03064-1 targets Ly-6A/E (Sca-1) in immunoassays as a matched antibody pair. Validated in Sandwich ELISA.

Capture antibody: Mouse Ly-6A/E (Sca-1) Recombinant monoclonal antibody, PBS Only (Capture) 87403-3-PBS (252494D1). 100 µg. Concentration 1 mg/mL.

Detection antibody: Mouse Ly-6A/E (Sca-1) Recombinant monoclonal antibody, PBS Only (Detector) 87403-2-PBS (252494A2). 100 µg. Concentration 1 mg/mL.

Unconjugated rabbit recombinant monoclonal antibody pair in PBS only storage buffer at a concentration of 1 mg/mL, ready for conjugation. Created using Proteintech's proprietary in-house recombinant technology. Recombinant production enables unrivalled batch-to-batch consistency, easy scale-up, and future security of supply.

Matched antibody pairs are designed for use in a variety of assays and platforms that require matched antibody pairs.

Antibody use should be optimized for each application and assay.

## Storage

**Storage:**  
Store at -80°C.  
**The product is shipped with ice packs. Upon receipt, store it immediately at -80°C**  
**Storage buffer:**  
PBS only

For technical support and original validation data for this product please contact:

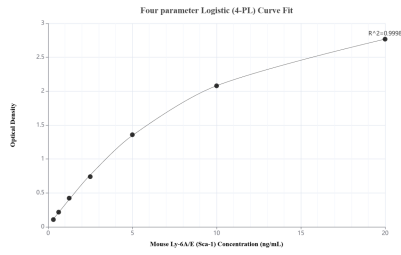
T: 4006900926

E: Proteintech-CN@ptglab.com

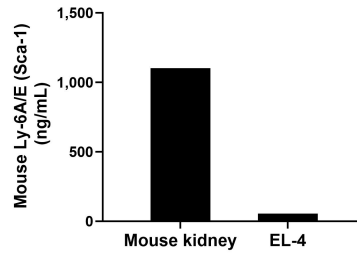
W: ptgcn.com

**This product is exclusively available under Proteintech Group brand and is not available to purchase from any other manufacturer.**

## Selected Validation Data



Sandwich ELISA standard curve of MP03064-1, Mouse Ly-6A/E (Sca-1) Recombinant Matched Antibody Pair - PBS only. 87403-3-PBS was coated to a plate as the capture antibody and incubated with serial dilutions of standard Eg4270. 87403-2-PBS was HRP conjugated as the detection antibody. Range: 0.313-20 ng/mL



The mean Ly-6A/E (Sca-1) concentration was determined to be 1,101.47 ng/mL in mouse kidney extract based on a 8.40 mg/mL extract load and 54.43 ng/mL in EL-4 cell extract based on a 3.70 mg/mL extract load.