

For Research Use Only

Mouse PDGF-BB Recombinant Matched Antibody Pair, PBS Only



Catalog Number:MP03061-2

Capture Antibody Information

Catalog Number:
87506-3-PBS
Host:
Rabbit
Isotype:
IgG
Purification Method:
Protein A purification

Clone ID:
252712A9
Reactivity:
mouse
GenBank:
AAH23427.1
Immunogen Catalog Number:
Eg4856

Conjugate:
Unconjugated
Full name:
platelet derived growth factor, B polypeptide
Gene ID:
18591

Detection Antibody Information

Catalog Number:
87506-4-PBS
Host:
Rabbit
Isotype:
IgG
Purification Method:
Protein A purification

Clone ID:
252712D2
Reactivity:
mouse
GenBank:
AAH23427.1
Immunogen Catalog Number:
Eg4856

Conjugate:
Unconjugated
Full name:
platelet derived growth factor, B polypeptide
Gene ID:
18591

Applications

Tested Applications:
Sandwich ELISA

Range:
0.156-10 ng/mL (Sandwich ELISA)

Recommended Dilutions:
It is recommended that this reagent should be titrated in each testing system to obtain optimal results.

Product Information

MP03061-2 targets PDGF-BB in immunoassays as a matched antibody pair. Validated in Sandwich ELISA.

Capture antibody: Mouse PDGF-BB Recombinant monoclonal antibody, PBS Only (Capture) 87506-3-PBS (252712A9). 100 µg. Concentration 1 mg/mL.

Detection antibody: Mouse PDGF-BB Recombinant monoclonal antibody, PBS Only (Detector) 87506-4-PBS (252712D2). 100 µg. Concentration 1 mg/mL.

Unconjugated rabbit recombinant monoclonal antibody pair in PBS only storage buffer at a concentration of 1 mg/mL, ready for conjugation. Created using Proteintech's proprietary in-house recombinant technology. Recombinant production enables unrivalled batch-to-batch consistency, easy scale-up, and future security of supply.

Matched antibody pairs are designed for use in a variety of assays and platforms that require matched antibody pairs.

Antibody use should be optimized for each application and assay.

Storage

Storage:
Store at -80°C.
The product is shipped with ice packs. Upon receipt, store it immediately at -80°C
Storage buffer:
PBS only

For technical support and original validation data for this product please contact:

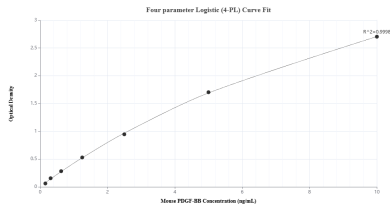
T: 4006900926

E: Proteintech-CN@ptglab.com

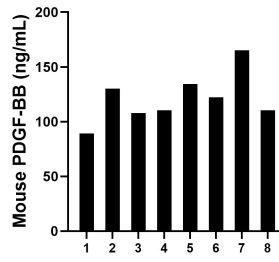
W: ptgcn.com

This product is exclusively available under Proteintech Group brand and is not available to purchase from any other manufacturer.

Selected Validation Data



Sandwich ELISA standard curve of MP03061-2, Mouse PDGF-BB Recombinant Matched Antibody Pair - PBS only. 87506-3-PBS was coated to a plate as the capture antibody and incubated with serial dilutions of standard Eg4856. 87506-4-PBS was HRP conjugated as the detection antibody. Range: 0.156-10 ng/mL



Serum of eight mice was measured. The mouse PDGF-BB concentration of detected samples was determined to be 115.71 ng/mL with a range of 89.30-134.38 ng/mL.