

For Research Use Only

CHP1 Recombinant Matched Antibody Pair, PBS Only



Catalog Number:MP03054-2

Capture Antibody Information

Catalog Number:
87479-5-PBS
Host:
Rabbit
Isotype:
IgG
Purification Method:
Protein A purification

Clone ID:
252725G8
Reactivity:
human
GenBank:
NM_007236.5
Immunogen Catalog Number:
Eg5746

Conjugate:
Unconjugated
Full name:
calcium binding protein P22
Gene ID:
11261

Detection Antibody Information

Catalog Number:
87479-3-PBS
Host:
Rabbit
Isotype:
IgG
Purification Method:
Protein A purification

Clone ID:
252725D7
Reactivity:
human
GenBank:
NM_007236.5
Immunogen Catalog Number:
Eg5746

Conjugate:
Unconjugated
Full name:
calcium binding protein P22
Gene ID:
11261

Applications

Tested Applications:
Sandwich ELISA

Range:
0.195-12.5 ng/mL (Sandwich ELISA)

Recommended Dilutions:
It is recommended that this reagent should be titrated in each testing system to obtain optimal results.

Product Information

MP03054-2 targets CHP1 in immunoassays as a matched antibody pair. Validated in Sandwich ELISA.

Capture antibody: CHP1 Recombinant monoclonal antibody, PBS Only (Capture) 87479-5-PBS (252725G8). 100 μ g. Concentration 1 mg/mL.

Detection antibody: CHP1 Recombinant monoclonal antibody, PBS Only (Detector) 87479-3-PBS (252725D7). 100 μ g. Concentration 1 mg/mL.

Unconjugated rabbit recombinant monoclonal antibody pair in PBS only storage buffer at a concentration of 1 mg/mL, ready for conjugation. Created using Proteintech's proprietary in-house recombinant technology. Recombinant production enables unrivalled batch-to-batch consistency, easy scale-up, and future security of supply.

Matched antibody pairs are designed for use in a variety of assays and platforms that require matched antibody pairs.

Antibody use should be optimized for each application and assay.

Storage

Storage:
Store at -80°C.
The product is shipped with ice packs. Upon receipt, store it immediately at -80°C
Storage buffer:
PBS only

For technical support and original validation data for this product please contact:

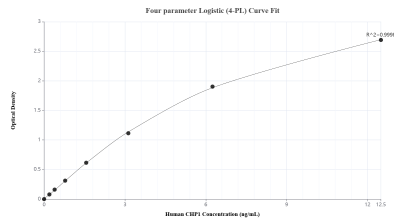
T: 4006900926

E: Proteintech-CN@ptglab.com

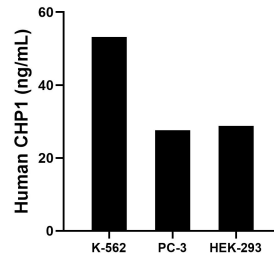
W: ptgcn.com

This product is exclusively available under Proteintech Group brand and is not available to purchase from any other manufacturer.

Selected Validation Data



Sandwich ELISA standard curve of MP03054-2, Human CHP1 Recombinant Matched Antibody Pair - PBS only. 87479-5-PBS was coated to a plate as the capture antibody and incubated with serial dilutions of standard Eg5746. 87479-3-PBS was HRP conjugated as the detection antibody. Range: 0.195-12.5 ng/mL.



The mean CHP1 concentration was determined to be 53.22 ng/mL in K-562 cell extract based on a 1.20 mg/mL extract load, 27.64 ng/mL in PC-3 cell extract based on a 1.30 mg/mL extract load and 28.79 ng/mL in HEK-293 cell extract based on a 1.20 mg/mL extract load.