

For Research Use Only

CHP1 Recombinant Matched Antibody Pair, PBS Only



Catalog Number:MP03054-1

Capture Antibody Information

Catalog Number:

87479-4-PBS

Host:

Rabbit

Isotype:

IgG

Purification Method:

Protein A purification

Clone ID:

252725B12

Reactivity:

human

GenBank:

NM_007236.5

Immunogen Catalog Number:

Eg5746

Conjugate:

Unconjugated

Full name:

calcium binding protein P22

Gene ID:

11261

Detection Antibody Information

Catalog Number:

87479-3-PBS

Host:

Rabbit

Isotype:

IgG

Purification Method:

Protein A purification

Clone ID:

252725D7

Reactivity:

human

GenBank:

NM_007236.5

Immunogen Catalog Number:

Eg5746

Conjugate:

Unconjugated

Full name:

calcium binding protein P22

Gene ID:

11261

Applications

Tested Applications:

Cytometric bead array

Range:

0.312-40 ng/mL (Cytometric Bead Array)

Recommended Dilutions:

It is recommended that this reagent should be titrated in each testing system to obtain optimal results.

Product Information

MP03054-1 targets CHP1 in immunoassays as a matched antibody pair. Validated in Cytometric bead array.

Capture antibody: CHP1 Recombinant monoclonal antibody, PBS Only (Capture) 87479-4-PBS (252725B12). 100 µg. Concentration 1 mg/mL.

Detection antibody: CHP1 Recombinant monoclonal antibody, PBS Only (Detector) 87479-3-PBS (252725D7). 100 µg. Concentration 1 mg/mL.

Unconjugated rabbit recombinant monoclonal antibody pair in PBS only storage buffer at a concentration of 1 mg/mL, ready for conjugation. Created using Proteintech's proprietary in-house recombinant technology. Recombinant production enables unrivalled batch-to-batch consistency, easy scale-up, and future security of supply.

Matched antibody pairs are designed for use in a variety of assays and platforms that require matched antibody pairs.

Antibody use should be optimized for each application and assay.

Storage

Storage:

Store at -80°C.

The product is shipped with ice packs. Upon receipt, store it immediately at -80°C

Storage buffer:

PBS only

For technical support and original validation data for this product please contact:

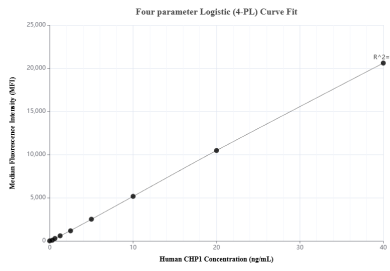
T: 4006900926

E: Proteintech-CN@ptglab.com

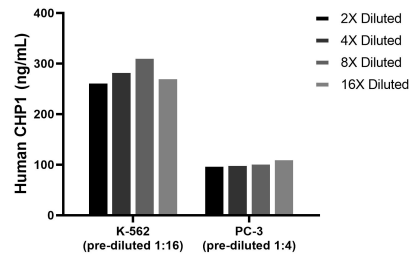
W: ptgcn.com

This product is exclusively available under Proteintech Group brand and is not available to purchase from any other manufacturer.

Selected Validation Data



Cytometric bead array standard curve of MP03054-1, CHP1 Recombinant Matched Antibody Pair, PBS Only. Capture antibody: 87479-4-PBS. Detection antibody: 87479-3-PBS. Standard: Eg5746. Range: 0.312-40 ng/mL



The mean CHP1 concentration was determined to be 285.0 ng/mL in K-562 cell extract based on a 1.2 mg/mL extract load, 105.5 ng/mL in PC-3 cell extract based on a 1.2 mg/mL extract load.