

For Research Use Only

GFRA3 Recombinant Matched Antibody Pair, PBS Only



Catalog Number:MP03049-1

Capture Antibody Information

Catalog Number:
87564-2-PBS
Host:
Rabbit
Isotype:
IgG
Purification Method:
Protein A purification

Clone ID:
252618A3
Reactivity:
human
GenBank:
NM_001496
Immunogen Catalog Number:
Eg5897

Conjugate:
Unconjugated
Full name:
GDNF family receptor alpha 3
Gene ID:
2676

Detection Antibody Information

Catalog Number:
87564-1-PBS
Host:
Rabbit
Isotype:
IgG
Purification Method:
Protein A purification

Clone ID:
252618A5
Reactivity:
human
GenBank:
NM_001496
Immunogen Catalog Number:
Eg5897

Conjugate:
Unconjugated
Full name:
GDNF family receptor alpha 3
Gene ID:
2676

Applications

Tested Applications:
Cytometric bead array

Range:
0.312-40 ng/mL (Cytometric Bead Array)

Recommended Dilutions:
It is recommended that this reagent should be titrated in each testing system to obtain optimal results.

Product Information

MP03049-1 targets GFRA3 in immunoassays as a matched antibody pair. Validated in Cytometric bead array.

Capture antibody: GFRA3 Recombinant monoclonal antibody, PBS Only (Capture) 87564-2-PBS (252618A3). 100 μ g. Concentration 1 mg/mL.

Detection antibody: GFRA3 Recombinant monoclonal antibody, PBS Only (Detector) 87564-1-PBS (252618A5). 100 μ g. Concentration 1 mg/mL.

Unconjugated rabbit recombinant monoclonal antibody pair in PBS only storage buffer at a concentration of 1 mg/mL, ready for conjugation. Created using Proteintech's proprietary in-house recombinant technology. Recombinant production enables unrivalled batch-to-batch consistency, easy scale-up, and future security of supply.

Matched antibody pairs are designed for use in a variety of assays and platforms that require matched antibody pairs.

Antibody use should be optimized for each application and assay.

Storage

Storage:
Store at -80°C.
The product is shipped with ice packs. Upon receipt, store it immediately at -80°C
Storage buffer:
PBS only

For technical support and original validation data for this product please contact:

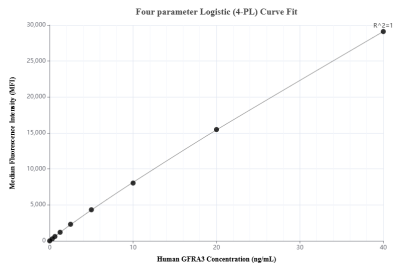
T: 4006900926

E: Proteintech-CN@ptglab.com

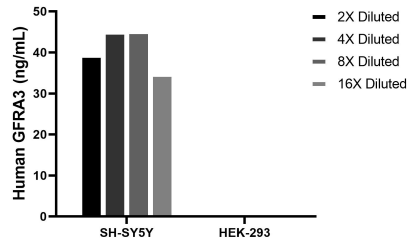
W: ptgcn.com

This product is exclusively available under Proteintech Group brand and is not available to purchase from any other manufacturer.

Selected Validation Data



Cytometric bead array standard curve of MP03049-1, GFRA3 Recombinant Matched Antibody Pair, PBS Only. Capture antibody: 87564-2-PBS. Detection antibody: 87564-1-PBS. Standard: Eg5897. Range: 0.312-40 ng/mL



The mean GFRA3 concentration was determined to be 41.0 ng/mL in SH-SY5Y cell extract based on a 1.2 mg/mL extract load, HEK-293 cell extract were served as a negative control.