

For Research Use Only

Ephrin A1 Recombinant Matched Antibody Pair, PBS Only



Catalog Number:MP03040-2

Capture Antibody Information

Catalog Number:
87470-4-PBS

Host:
Rabbit

Isotype:
IgG

Purification Method:
Protein A purification

Clone ID:
252222B8

Reactivity:
human

GenBank:
NM_004428.3

Immunogen Catalog Number:
Eg5498

Conjugate:
Unconjugated

Full name:
ephrin-A1

Gene ID:
1942

Detection Antibody Information

Catalog Number:
87470-5-PBS

Host:
Rabbit

Isotype:
IgG

Purification Method:
Protein A purification

Clone ID:
252222G11

Reactivity:
human

GenBank:
NM_004428.3

Immunogen Catalog Number:
Eg5498

Conjugate:
Unconjugated

Full name:
ephrin-A1

Gene ID:
1942

Applications

Tested Applications:
Sandwich ELISA

Range:
93.8-1500 pg/mL (Sandwich ELISA)

Recommended Dilutions:
It is recommended that this reagent should be titrated in each testing system to obtain optimal results.

Product Information

MP03040-2 targets Ephrin A1 in immunoassays as a matched antibody pair. Validated in Sandwich ELISA.

Capture antibody: Ephrin A1 Recombinant monoclonal antibody, PBS Only (Capture) 87470-4-PBS (252222B8). 100 μ g. Concentration 1 mg/mL.

Detection antibody: EFNA1/Ephrin-A1 Recombinant monoclonal antibody, PBS Only (Detector) 87470-5-PBS (252222G11). 100 μ g. Concentration 1 mg/mL.

Unconjugated rabbit recombinant monoclonal antibody pair in PBS only storage buffer at a concentration of 1 mg/mL, ready for conjugation. Created using Proteintech's proprietary in-house recombinant technology. Recombinant production enables unrivalled batch-to-batch consistency, easy scale-up, and future security of supply.

Matched antibody pairs are designed for use in a variety of assays and platforms that require matched antibody pairs.

Antibody use should be optimized for each application and assay.

Storage

Storage:
Store at -80°C.

The product is shipped with ice packs. Upon receipt, store it immediately at -80°C

Storage buffer:
PBS only

For technical support and original validation data for this product please contact:

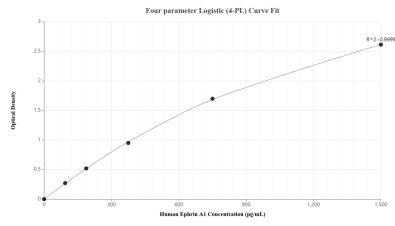
T: 4006900926

E: Proteintech-CN@ptglab.com

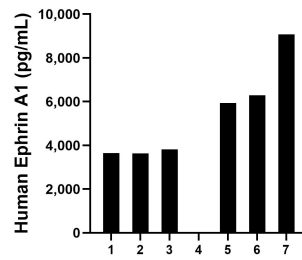
W: ptgcn.com

This product is exclusively available under Proteintech Group brand and is not available to purchase from any other manufacturer.

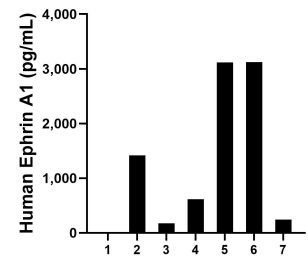
Selected Validation Data



Sandwich ELISA standard curve of MP03040-2, Human Ephrin A1 Recombinant Matched Antibody Pair - PBS only. 87470-4-PBS was coated to a plate as the capture antibody and incubated with serial dilutions of standard Eg5498. 87470-5-PBS was HRP conjugated as the detection antibody. Range: 93.8-1500 pg/mL



Serum of seven individual healthy human donors was measured. The Ephrin A1 concentration of detected samples was determined to be 4,635.6 pg/mL with a range of 49.2-9,074.2 pg/mL.



Plasma of seven individual healthy human donors was measured. The Ephrin A1 concentration of detected samples was determined to be 1,243.3 pg/mL with a range of 17.6-3,119.6 pg/mL.