

For Research Use Only

Mouse MRC2 Recombinant Matched Antibody Pair, PBS Only



Catalog Number:MP03031-1

Capture Antibody Information

Catalog Number: 87494-2-PBS	Clone ID: 252048C6	Conjugate: Unconjugated
Host: Rabbit	Reactivity: mouse	Full name: mannose receptor, C type 2
Isotype: IgG	GenBank: NM_008626.3	Gene ID: 17534
Purification Method: Protein A purification	Immunogen Catalog Number: Eg6310	

Detection Antibody Information

Catalog Number: 87494-1-PBS	Clone ID: 252048F11	Conjugate: Unconjugated
Host: Rabbit	Reactivity: mouse	Full name: mannose receptor, C type 2
Isotype: IgG	GenBank: NM_008626.3	Gene ID: 17534
Purification Method: Protein A purification	Immunogen Catalog Number: Eg6310	

Applications

Tested Applications: Cytometric bead array	Range: 0.625-80 ng/mL (Cytometric Bead Array)	Recommended Dilutions: It is recommended that this reagent should be titrated in each testing system to obtain optimal results.
--	---	---

Product Information

MP03031-1 targets MRC2 in immunoassays as a matched antibody pair. Validated in Cytometric bead array.

Capture antibody: Mouse CD280/Mrc2 Recombinant monoclonal antibody, PBS Only (Capture) 87494-2-PBS (252048C6). 100 µg. Concentration 1 mg/mL.

Detection antibody: Mouse CD280/Mrc2 Recombinant monoclonal antibody, PBS Only (Detector) 87494-1-PBS (252048F11). 100 µg. Concentration 1 mg/mL.

Unconjugated rabbit recombinant monoclonal antibody pair in PBS only storage buffer at a concentration of 1 mg/mL, ready for conjugation. Created using Proteintech's proprietary in-house recombinant technology. Recombinant production enables unrivalled batch-to-batch consistency, easy scale-up, and future security of supply.

Matched antibody pairs are designed for use in a variety of assays and platforms that require matched antibody pairs.

Antibody use should be optimized for each application and assay.

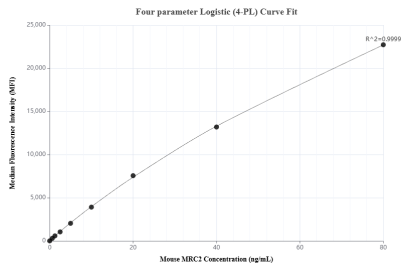
Storage

Storage:
Store at -80°C.
The product is shipped with ice packs. Upon receipt, store it immediately at -80°C
Storage buffer:
PBS only

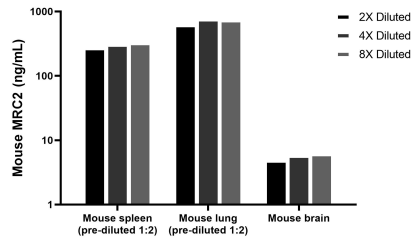
For technical support and original validation data for this product please contact:
T: 4006900926 E: Proteintech-CN@ptglab.com W: ptgcn.com

This product is exclusively available under Proteintech Group brand and is not available to purchase from any other manufacturer.

Selected Validation Data



Cytometric bead array standard curve of MP03031-1, MOUSE MRC2 Recombinant Matched Antibody Pair, PBS Only. Capture antibody: 87494-2-PBS. Detection antibody: 87494-1-PBS. Standard: Eg6310. Range: 0.625-80 ng/mL



The mean MRC2 concentration was determined to be 298.7 ng/mL in Mouse spleen tissue extract based on a 6.4 mg/mL extract load, 698.0 ng/mL in Mouse lung tissue extract based on a 5.0 mg/mL extract load, 5.5 ng/mL in Mouse brain tissue extract based on a 3.2 mg/mL extract load.