

For Research Use Only

SRp20 Recombinant Matched Antibody Pair, PBS Only



Catalog Number:MP03029-1

Capture Antibody Information

Catalog Number:
87438-3-PBS

Host:
Rabbit

Isotype:
IgG

Purification Method:
Protein A purification

Clone ID:
252792A1

Reactivity:
human

GenBank:
BC000914

Immunogen Catalog Number:
Ag1341

Conjugate:
Unconjugated

Full name:
splicing factor, arginine/serine-rich 3

Gene ID:
6428

Detection Antibody Information

Catalog Number:
87438-2-PBS

Host:
Rabbit

Isotype:
IgG

Purification Method:
Protein A purification

Clone ID:
252792E8

Reactivity:
human

GenBank:
BC000914

Immunogen Catalog Number:
Ag1341

Conjugate:
Unconjugated

Full name:
splicing factor, arginine/serine-rich 3

Gene ID:
6428

Applications

Tested Applications:
Cytometric bead array

Range:
0.625-80 ng/mL (Cytometric Bead Array)

Recommended Dilutions:
It is recommended that this reagent should be titrated in each testing system to obtain optimal results.

Product Information

MP03029-1 targets SRp20 in immunoassays as a matched antibody pair. Validated in Cytometric bead array.

Capture antibody: SRp20 Recombinant monoclonal antibody, PBS Only (Capture) 87438-3-PBS (252792A1). 100 μ g. Concentration 1 mg/mL.

Detection antibody: SRp20 Recombinant monoclonal antibody, PBS Only (Detector) 87438-2-PBS (252792E8). 100 μ g. Concentration 1 mg/mL.

Unconjugated rabbit recombinant monoclonal antibody pair in PBS only storage buffer at a concentration of 1 mg/mL, ready for conjugation. Created using Proteintech's proprietary in-house recombinant technology. Recombinant production enables unrivalled batch-to-batch consistency, easy scale-up, and future security of supply.

Matched antibody pairs are designed for use in a variety of assays and platforms that require matched antibody pairs.

Antibody use should be optimized for each application and assay.

Storage

Storage:
Store at -80°C.

The product is shipped with ice packs. Upon receipt, store it immediately at -80°C

Storage buffer:
PBS only

For technical support and original validation data for this product please contact:

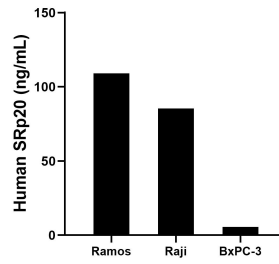
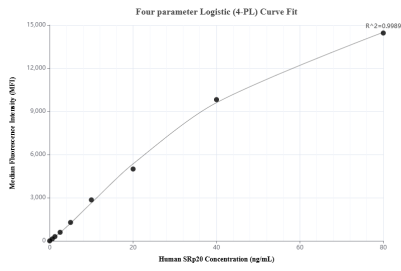
T: 4006900926

E: Proteintech-CN@ptglab.com

W: ptgcn.com

This product is exclusively available under Proteintech Group brand and is not available to purchase from any other manufacturer.

Selected Validation Data



Cytometric bead array standard curve of MP03029-1, SRp20 Recombinant Matched Antibody Pair, PBS Only. Capture antibody: 87438-3-PBS. Detection antibody: 87438-2-PBS. Standard: Ag1341. Range: 0.625-80 ng/mL

The mean SRp20 concentration was determined to be 109.1 ng/mL in Ramos cell extract based on a 1.2 mg/mL extract load, 85.5 ng/mL in Raji cell extract based on a 1.2 mg/mL extract load, 5.6 ng/mL in BxPC-3 cell extract based on a 1.2 mg/mL extract load.