

For Research Use Only



ACSL5 Recombinant Matched Antibody Pair, PBS Only

Catalog Number:MP03024-1

Capture Antibody Information

Catalog Number:
86982-4-PBS
Host:
Rabbit
Isotype:
IgG
Purification Method:
Protein A purification

Clone ID:
252098F3
Reactivity:
human
GenBank:
BC007985
Immunogen Catalog Number:
Ag8258

Conjugate:
Unconjugated
Full name:
acyl-CoA synthetase long-chain family member 5
Gene ID:
51703

Detection Antibody Information

Catalog Number:
86982-3-PBS
Host:
Rabbit
Isotype:
IgG
Purification Method:
Protein A purification

Clone ID:
252098F12
Reactivity:
human
GenBank:
BC007985
Immunogen Catalog Number:
Ag8258

Conjugate:
Unconjugated
Full name:
acyl-CoA synthetase long-chain family member 5
Gene ID:
51703

Applications

Tested Applications:
Sandwich ELISA

Range:
0.781-50 ng/mL (Sandwich ELISA)

Recommended Dilutions:
It is recommended that this reagent should be titrated in each testing system to obtain optimal results.

Product Information

MP03024-1 targets ACSL5 in immunoassays as a matched antibody pair. Validated in Sandwich ELISA.

Capture antibody: ACSL5 Recombinant monoclonal antibody, PBS Only (Capture) 86982-4-PBS (252098F3). 100 µg. Concentration 1 mg/mL.

Detection antibody: ACSL5 Recombinant monoclonal antibody, PBS Only (Detector) 86982-3-PBS (252098F12). 100 µg. Concentration 1 mg/mL.

Unconjugated rabbit recombinant monoclonal antibody pair in PBS only storage buffer at a concentration of 1 mg/mL, ready for conjugation. Created using Proteintech's proprietary in-house recombinant technology. Recombinant production enables unrivalled batch-to-batch consistency, easy scale-up, and future security of supply.

Matched antibody pairs are designed for use in a variety of assays and platforms that require matched antibody pairs.

Antibody use should be optimized for each application and assay.

Storage

Storage:
Store at -80°C.
The product is shipped with ice packs. Upon receipt, store it immediately at -80°C
Storage buffer:
PBS only

For technical support and original validation data for this product please contact:

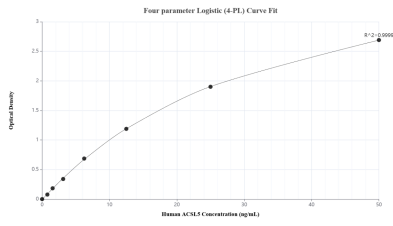
T: 4006900926

E: Proteintech-CN@ptglab.com

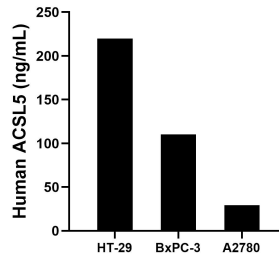
W: ptgcn.com

This product is exclusively available under Proteintech Group brand and is not available to purchase from any other manufacturer.

Selected Validation Data



Sandwich ELISA standard curve of MP03024-1, Human ACSL5 Recombinant Matched Antibody Pair - PBS only. 86982-4-PBS was coated to a plate as the capture antibody and incubated with serial dilutions of standard Ag8258. 86982-3-PBS was HRP conjugated as the detection antibody. Range: 0.781-50 ng/mL.



The mean ACSL5 concentration was determined to be 219.78 ng/mL in HT-29 cell extract based on a 1.10 mg/mL extract load, 110.43 ng/mL in BxPC-3 cell extract based on a 1.20 mg/mL extract load and 29.12 ng/mL in A2780 cell extract based on a 1.20 mg/mL extract load.