

For Research Use Only

DTD1 Recombinant Matched Antibody Pair, PBS Only



Catalog Number:MP03023-1

Capture Antibody Information

Catalog Number:
87297-3-PBS
Host:
Rabbit
Isotype:
IgG
Purification Method:
Protein A purification

Clone ID:
252568B12
Reactivity:
human
GenBank:
BC045167
Immunogen Catalog Number:
Ag11510

Conjugate:
Unconjugated
Full name:
D-tyrosyl-tRNA deacylase 1 homolog
(*S. cerevisiae*)
Gene ID:
92675

Detection Antibody Information

Catalog Number:
87297-2-PBS
Host:
Rabbit
Isotype:
IgG
Purification Method:
Protein A purification

Clone ID:
252568E10
Reactivity:
human
GenBank:
BC045167
Immunogen Catalog Number:
Ag11510

Conjugate:
Unconjugated
Full name:
D-tyrosyl-tRNA deacylase 1 homolog
(*S. cerevisiae*)
Gene ID:
92675

Applications

Tested Applications:
Sandwich ELISA

Range:
0.391-25 ng/mL (Sandwich ELISA)

Recommended Dilutions:
It is recommended that this reagent should be titrated in each testing system to obtain optimal results.

Product Information

MP03023-1 targets DTD1 in immunoassays as a matched antibody pair. Validated in Sandwich ELISA.

Capture antibody: DTD1 Recombinant monoclonal antibody, PBS Only (Capture) 87297-3-PBS (252568B12). 100 µg. Concentration 1 mg/mL.

Detection antibody: DTD1 Recombinant monoclonal antibody, PBS Only (Detector) 87297-2-PBS (252568E10). 100 µg. Concentration 1 mg/mL.

Unconjugated rabbit recombinant monoclonal antibody pair in PBS only storage buffer at a concentration of 1 mg/mL, ready for conjugation. Created using Proteintech's proprietary in-house recombinant technology. Recombinant production enables unrivalled batch-to-batch consistency, easy scale-up, and future security of supply.

Matched antibody pairs are designed for use in a variety of assays and platforms that require matched antibody pairs.

Antibody use should be optimized for each application and assay.

Storage

Storage:
Store at -80°C.
The product is shipped with ice packs. Upon receipt, store it immediately at -80°C
Storage buffer:
PBS only

For technical support and original validation data for this product please contact:

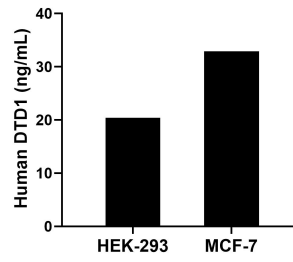
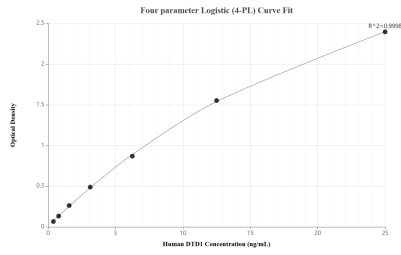
T: 4006900926

E: Proteintech-CN@ptglab.com

W: ptgcn.com

This product is exclusively available under Proteintech Group brand and is not available to purchase from any other manufacturer.

Selected Validation Data



Sandwich ELISA standard curve of MP03023-1, Human DTD1 Recombinant Matched Antibody Pair - PBS only. 87297-3-PBS was coated to a plate as the capture antibody and incubated with serial dilutions of standard Ag11510. 87297-2-PBS was HRP conjugated as the detection antibody. Range: 0.391-25 ng/mL

The mean DTD1 concentration was determined to be 20.40 ng/mL in HEK-293 cell extract based on a 1.20 mg/mL extract load and 32.90 ng/mL in MCF-7 cell extract based on a 1.20 mg/mL extract load.