

For Research Use Only

# PPM1E Recombinant Matched Antibody Pair, PBS Only



Catalog Number:MP03018-1

## Capture Antibody Information

**Catalog Number:**  
87405-3-PBS  
**Host:**  
Rabbit  
**Isotype:**  
IgG  
**Purification Method:**  
Protein A purification

**Clone ID:**  
252801A6  
**Reactivity:**  
human  
**GenBank:**  
BC136290  
**Immunogen Catalog Number:**  
Ag18903

**Conjugate:**  
Unconjugated  
**Full name:**  
protein phosphatase 1E (PP2C domain containing)  
**Gene ID:**  
22843

## Detection Antibody Information

**Catalog Number:**  
87405-2-PBS  
**Host:**  
Rabbit  
**Isotype:**  
IgG  
**Purification Method:**  
Protein A purification

**Clone ID:**  
252801C12  
**Reactivity:**  
human  
**GenBank:**  
BC136290  
**Immunogen Catalog Number:**  
Ag18903

**Conjugate:**  
Unconjugated  
**Full name:**  
protein phosphatase 1E (PP2C domain containing)  
**Gene ID:**  
22843

## Applications

**Tested Applications:**  
Cytometric bead array

**Range:**  
0.625-80 ng/mL (Cytometric Bead Array)

**Recommended Dilutions:**  
It is recommended that this reagent should be titrated in each testing system to obtain optimal results.

## Product Information

MP03018-1 targets PPM1E in immunoassays as a matched antibody pair. Validated in Cytometric bead array.

Capture antibody: PPM1E Recombinant monoclonal antibody, PBS Only (Capture) 87405-3-PBS (252801A6). 100  $\mu$ g. Concentration 1 mg/mL.

Detection antibody: PPM1E Recombinant monoclonal antibody, PBS Only (Detector) 87405-2-PBS (252801C12). 100  $\mu$ g. Concentration 1 mg/mL.

Unconjugated rabbit recombinant monoclonal antibody pair in PBS only storage buffer at a concentration of 1 mg/mL, ready for conjugation. Created using Proteintech's proprietary in-house recombinant technology. Recombinant production enables unrivalled batch-to-batch consistency, easy scale-up, and future security of supply.

Matched antibody pairs are designed for use in a variety of assays and platforms that require matched antibody pairs.

Antibody use should be optimized for each application and assay.

## Storage

**Storage:**  
Store at -80°C.  
**The product is shipped with ice packs. Upon receipt, store it immediately at -80°C**  
**Storage buffer:**  
PBS only

For technical support and original validation data for this product please contact:

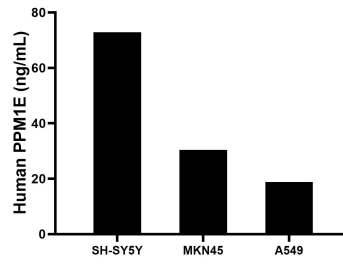
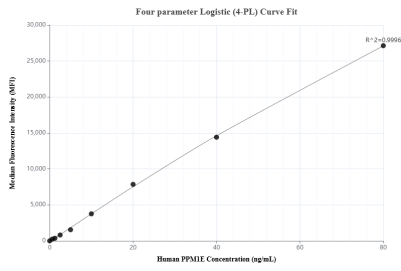
T: 4006900926

E: [Proteintech-CN@ptglab.com](mailto:Proteintech-CN@ptglab.com)

W: [ptgcn.com](http://ptgcn.com)

**This product is exclusively available under Proteintech Group brand and is not available to purchase from any other manufacturer.**

## Selected Validation Data



Cytometric bead array standard curve of MP03018-1, PPM1E Recombinant Matched Antibody Pair, PBS Only. Capture antibody: 87405-3-PBS. Detection antibody: 87405-2-PBS. Standard: Ag18903. Range: 0.625-80 ng/mL

The mean PPM1E concentration was determined to be 72.9 ng/mL in SH-SY5Y cell extract based on a 1.2 mg/mL extract load, 30.4 ng/mL in MKN45 cell extract based on a 1.2 mg/mL extract load, 18.8 ng/mL in A549 cell extract based on a 1.2 mg/mL extract load.