

For Research Use Only

CCL18 Recombinant Matched Antibody Pair, PBS Only



Catalog Number:MP03008-2

Capture Antibody Information

Catalog Number:
87440-4-PBS

Host:
Rabbit

Isotype:
IgG

Purification Method:
Protein A purification

Clone ID:
251591H7

Reactivity:
human

GenBank:
BC069700

Immunogen Catalog Number:
Eg5093

Conjugate:
Unconjugated

Full name:
chemokine (C-C motif) ligand 18
(pulmonary and activation-regulated)

Gene ID:
6362

Detection Antibody Information

Catalog Number:
87440-3-PBS

Host:
Rabbit

Isotype:
IgG

Purification Method:
Protein A purification

Clone ID:
251591E11

Reactivity:
human

GenBank:
BC069700

Immunogen Catalog Number:
Eg5093

Conjugate:
Unconjugated

Full name:
chemokine (C-C motif) ligand 18
(pulmonary and activation-regulated)

Gene ID:
6362

Applications

Tested Applications:
Sandwich ELISA

Range:
39.1-1250 pg/mL (Sandwich ELISA)

Recommended Dilutions:
It is recommended that this reagent should be titrated in each testing system to obtain optimal results.

Product Information

MP03008-2 targets CCL18 in immunoassays as a matched antibody pair. Validated in Sandwich ELISA.

Capture antibody: CCL18 Recombinant monoclonal antibody, PBS Only (Capture) 87440-4-PBS (251591H7). 100 µg. Concentration 1 mg/mL.

Detection antibody: CCL18 Recombinant monoclonal antibody, PBS Only (Detector) 87440-3-PBS (251591E11). 100 µg. Concentration 1 mg/mL.

Unconjugated rabbit recombinant monoclonal antibody pair in PBS only storage buffer at a concentration of 1 mg/mL, ready for conjugation. Created using Proteintech's proprietary in-house recombinant technology. Recombinant production enables unrivalled batch-to-batch consistency, easy scale-up, and future security of supply.

Matched antibody pairs are designed for use in a variety of assays and platforms that require matched antibody pairs.

Antibody use should be optimized for each application and assay.

Storage

Storage:

Store at -80°C.

The product is shipped with ice packs. Upon receipt, store it immediately at -80°C

Storage buffer:

PBS only

For technical support and original validation data for this product please contact:

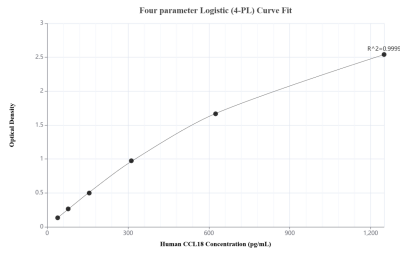
T: 4006900926

E: Proteintech-CN@ptglab.com

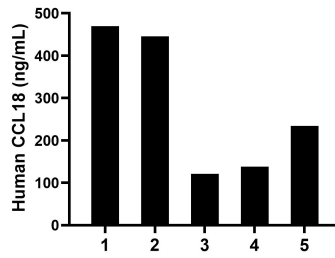
W: ptgcn.com

This product is exclusively available under Proteintech Group brand and is not available to purchase from any other manufacturer.

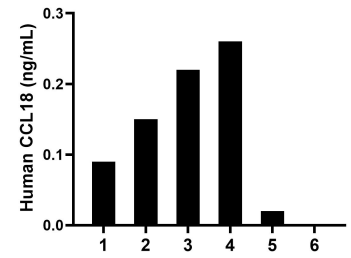
Selected Validation Data



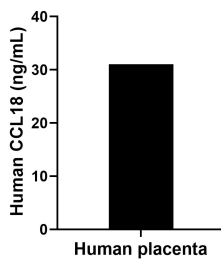
Sandwich ELISA standard curve of MP03008-2, Human CCL18 Recombinant Matched Antibody Pair - PBS only. 87440-4-PBS was coated to a plate as the capture antibody and incubated with serial dilutions of standard Eg5093. 87440-3-PBS was HRP conjugated as the detection antibody. Range: 39.1-1250 pg/mL



Plasma of five individual healthy human donors was measured. The CCL18 concentration of detected samples was determined to be 281.8 ng/mL with a range of 121.1-469.5 ng/mL.



Urine of six individual healthy human donors was measured. The CCL18 concentration of detected samples was determined to be 0.2 ng/mL with a range of ND-0.3 ng/mL.



The mean CCL18 concentration was determined to be 31.0 ng/mL in human placenta extract based on a 3.8 mg/mL extract load.