

For Research Use Only

CCL18 Recombinant Matched Antibody Pair, PBS Only



Catalog Number:MP03008-1

Capture Antibody Information

Catalog Number:
87440-2-PBS
Host:
Rabbit
Isotype:
IgG
Purification Method:
Protein A purification

Clone ID:
251591F11
Reactivity:
human
GenBank:
BC069700
Immunogen Catalog Number:
Eg5093

Conjugate:
Unconjugated
Full name:
chemokine (C-C motif) ligand 18
(pulmonary and activation-regulated)
Gene ID:
6362

Detection Antibody Information

Catalog Number:
87440-1-PBS
Host:
Rabbit
Isotype:
IgG
Purification Method:
Protein A purification

Clone ID:
251591A4
Reactivity:
human
GenBank:
BC069700
Immunogen Catalog Number:
Eg5093

Conjugate:
Unconjugated
Full name:
chemokine (C-C motif) ligand 18
(pulmonary and activation-regulated)
Gene ID:
6362

Applications

Tested Applications:
Cytometric bead array

Range:
0.625-40 ng/mL (Cytometric Bead Array)

Recommended Dilutions:
It is recommended that this reagent should be titrated in each testing system to obtain optimal results.

Product Information

MP03008-1 targets CCL18 in immunoassays as a matched antibody pair. Validated in Cytometric bead array.

Capture antibody: CCL18 Recombinant monoclonal antibody, PBS Only (Capture) 87440-2-PBS (251591F11). 100 μ g. Concentration 1 mg/ml.

Detection antibody: CCL18 Recombinant monoclonal antibody, PBS Only (Detector) 87440-1-PBS (251591A4). 100 μ g. Concentration 1 mg/ml.

Unconjugated rabbit recombinant monoclonal antibody pair in PBS only storage buffer at a concentration of 1 mg/mL, ready for conjugation. Created using Proteintech's proprietary in-house recombinant technology. Recombinant production enables unrivalled batch-to-batch consistency, easy scale-up, and future security of supply.

Matched antibody pairs are designed for use in a variety of assays and platforms that require matched antibody pairs.

Antibody use should be optimized for each application and assay.

Storage

Storage:
Store at -80°C.
The product is shipped with ice packs. Upon receipt, store it immediately at -80°C
Storage buffer:
PBS only

For technical support and original validation data for this product please contact:

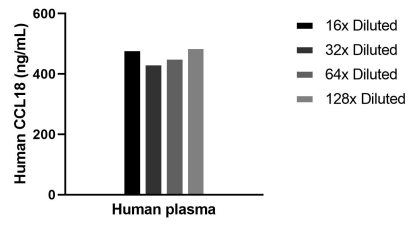
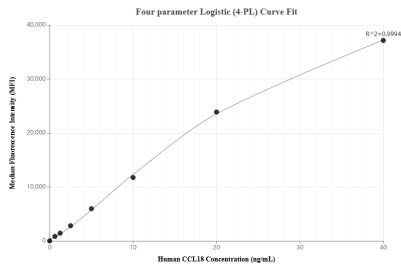
T: 4006900926

E: Proteintech-CN@ptglab.com

W: ptgcn.com

This product is exclusively available under Proteintech Group brand and is not available to purchase from any other manufacturer.

Selected Validation Data



The mean CCL18 concentration was determined to be 464.4 ng/mL in Human plasma.

Cytometric bead array standard curve of MP03008-1, CCL18 Recombinant Matched Antibody Pair, PBS Only. Capture antibody: 87440-2-PBS. Detection antibody: 87440-1-PBS. Standard: Eg5093. Range: 0.625-40 ng/mL