

For Research Use Only

C3/C3b/C3c Recombinant Matched Antibody Pair, PBS Only



Catalog Number:MP03006-2

Capture Antibody Information

Catalog Number:
87386-5-PBS
Host:
Rabbit
Isotype:
IgG
Purification Method:
Protein A purification

Clone ID:
252159D3
Reactivity:
human
GenBank:
NM_000064.4
Immunogen Catalog Number:
Eg4880

Conjugate:
Unconjugated
Full name:
complement component 3
Gene ID:
718

Detection Antibody Information

Catalog Number:
87386-4-PBS
Host:
Rabbit
Isotype:
IgG
Purification Method:
Protein A purification

Clone ID:
252159D7
Reactivity:
human
GenBank:
NM_000064.4
Immunogen Catalog Number:
Eg4880

Conjugate:
Unconjugated
Full name:
complement component 3
Gene ID:
718

Applications

Tested Applications:
Sandwich ELISA

Range:
0.156-10 ng/mL (Sandwich ELISA)

Recommended Dilutions:
It is recommended that this reagent should be titrated in each testing system to obtain optimal results.

Product Information

MP03006-2 targets C3/C3b/C3c in immunoassays as a matched antibody pair. Validated in Sandwich ELISA.

Capture antibody: Complement component C3 Recombinant monoclonal antibody, PBS Only (Capture) 87386-5-PBS (252159D3). 100 µg. Concentration 1 mg/mL.

Detection antibody: Complement component C3 Recombinant monoclonal antibody, PBS Only (Detector) 87386-4-PBS (252159D7). 100 µg. Concentration 1 mg/mL.

Unconjugated rabbit recombinant monoclonal antibody pair in PBS only storage buffer at a concentration of 1 mg/mL, ready for conjugation. Created using Proteintech's proprietary in-house recombinant technology. Recombinant production enables unrivalled batch-to-batch consistency, easy scale-up, and future security of supply.

Matched antibody pairs are designed for use in a variety of assays and platforms that require matched antibody pairs.

Antibody use should be optimized for each application and assay.

Storage

Storage:
Store at -80°C.
The product is shipped with ice packs. Upon receipt, store it immediately at -80°C
Storage buffer:
PBS only

For technical support and original validation data for this product please contact:

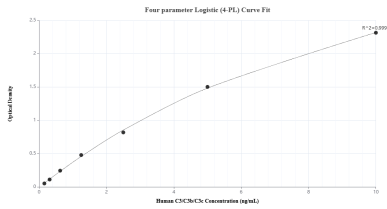
T: 4006900926

E: Proteintech-CN@ptglab.com

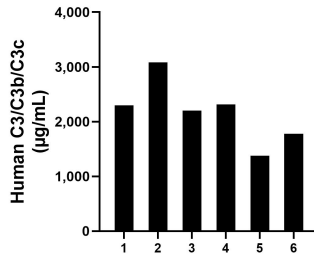
W: ptgcn.com

This product is exclusively available under Proteintech Group brand and is not available to purchase from any other manufacturer.

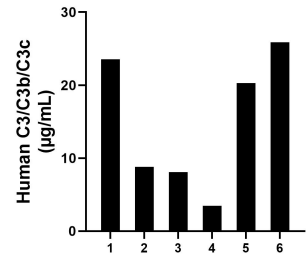
Selected Validation Data



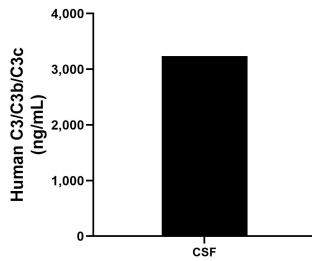
Sandwich ELISA standard curve of MP03006-2, Human C3/C3b/C3c Recombinant Matched Antibody Pair - PBS only. 87386-5-PBS was coated to a plate as the capture antibody and incubated with serial dilutions of standard Eg4880. 87386-4-PBS was HRP conjugated as the detection antibody. Range: 0.156-10 ng/mL



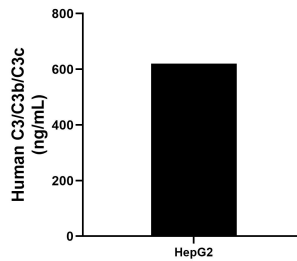
Plasma of six individual healthy human donors was measured. The human C3/C3b/C3c concentration of detected samples was determined to be 2,175.94 µg/mL with a range of 1,379.7 - 3,080.62 µg/mL.



Saliva of six individual healthy human donors was measured. The human C3/C3b/C3c concentration of detected samples was determined to be 15.02 µg/mL with a range of 3.49 - 25.88 µg/mL.



CSF of one individual healthy human donors was measured. The human C3/C3b/C3c concentration of detected samples was determined to be 3,234.93 ng/mL.



HepG2 (human hepatocellular carcinoma cells) were cultured in DMEM supplemented with 10% fetal bovine serum, 2.5 mM L-glutamine, 100 U/mL penicillin, and 100 µg/mL streptomycin sulfate. An aliquot of the cell culture supernate was removed, assayed for human C3/C3b/C3c, and measured 620.71 ng/mL.