

For Research Use Only

C3/C3b/C3c Recombinant Matched Antibody Pair, PBS Only



Catalog Number:MP03006-1

Capture Antibody Information

Catalog Number:
87386-3-PBS
Host:
Rabbit
Isotype:
IgG
Purification Method:
Protein A purification

Clone ID:
252159G11
Reactivity:
human
GenBank:
NM_000064.4
Immunogen Catalog Number:
Eg4880

Conjugate:
Unconjugated
Full name:
complement component 3
Gene ID:
718

Detection Antibody Information

Catalog Number:
87386-2-PBS
Host:
Rabbit
Isotype:
IgG
Purification Method:
Protein A purification

Clone ID:
252159D4
Reactivity:
human
GenBank:
NM_000064.4
Immunogen Catalog Number:
Eg4880

Conjugate:
Unconjugated
Full name:
complement component 3
Gene ID:
718

Applications

Tested Applications:
Cytometric bead array

Range:
0.625-80 ng/mL (Cytometric Bead Array)

Recommended Dilutions:
It is recommended that this reagent should be titrated in each testing system to obtain optimal results.

Product Information

MP03006-1 targets C3/C3b/C3c in immunoassays as a matched antibody pair. Validated in Cytometric bead array.

Capture antibody: Complement component C3 Recombinant monoclonal antibody, PBS Only (Capture) 87386-3-PBS (252159G11). 100 µg. Concentration 1 mg/ml.

Detection antibody: Complement component C3 Recombinant monoclonal antibody, PBS Only (Detector) 87386-2-PBS (252159D4). 100 µg. Concentration 1 mg/ml.

Unconjugated rabbit recombinant monoclonal antibody pair in PBS only storage buffer at a concentration of 1 mg/mL, ready for conjugation. Created using Proteintech's proprietary in-house recombinant technology. Recombinant production enables unrivalled batch-to-batch consistency, easy scale-up, and future security of supply.

Matched antibody pairs are designed for use in a variety of assays and platforms that require matched antibody pairs.

Antibody use should be optimized for each application and assay.

Storage

Storage:
Store at -80°C.
The product is shipped with ice packs. Upon receipt, store it immediately at -80°C
Storage buffer:
PBS only

For technical support and original validation data for this product please contact:

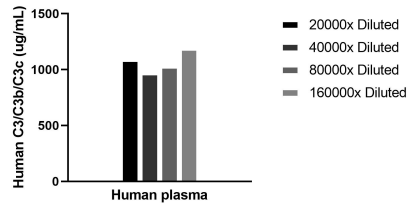
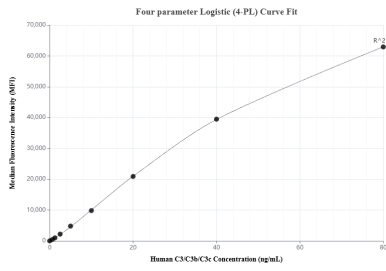
T: 4006900926

E: Proteintech-CN@ptglab.com

W: ptgcn.com

This product is exclusively available under Proteintech Group brand and is not available to purchase from any other manufacturer.

Selected Validation Data



The mean C3/C3b/C3c concentration was determined to be 1064 ug/mL in Human plasma.

Cytometric bead array standard curve of MP03006-1, C3/C3b/C3c Recombinant Matched Antibody Pair, PBS Only. Capture antibody: 87386-3-PBS. Detection antibody: 87386-2-PBS. Standard: Eg4880. Range: 0.625-80 ng/mL.