

For Research Use Only

CCL11/Eotaxin Recombinant Matched Antibody Pair, PBS Only



Catalog Number:MP03000-1

Capture Antibody Information

Catalog Number:
87475-2-PBS
Host:
Rabbit
Isotype:
IgG
Purification Method:
Protein A purification

Clone ID:
251987E11
Reactivity:
human
GenBank:
BC017850
Immunogen Catalog Number:
Eg5095

Conjugate:
Unconjugated
Full name:
chemokine (C-C motif) ligand 11
Gene ID:
6356

Detection Antibody Information

Catalog Number:
87475-1-PBS
Host:
Rabbit
Isotype:
IgG
Purification Method:
Protein A purification

Clone ID:
251987D1
Reactivity:
human
GenBank:
BC017850
Immunogen Catalog Number:
Eg5095

Conjugate:
Unconjugated
Full name:
chemokine (C-C motif) ligand 11
Gene ID:
6356

Applications

Tested Applications:
Sandwich ELISA

Range:
46.9-3000 pg/mL (Sandwich ELISA)

Recommended Dilutions:
It is recommended that this reagent should be titrated in each testing system to obtain optimal results.

Product Information

MP03000-1 targets CCL11/Eotaxin in immunoassays as a matched antibody pair. Validated in Sandwich ELISA.

Capture antibody: CCL11/Eotaxin Recombinant monoclonal antibody, PBS Only (Capture) 87475-2-PBS (251987E11). 100 µg. Concentration 1 mg/mL.

Detection antibody: CCL11/Eotaxin Recombinant monoclonal antibody, PBS Only (Detector) 87475-1-PBS (251987D1). 100 µg. Concentration 1 mg/mL.

Unconjugated rabbit recombinant monoclonal antibody pair in PBS only storage buffer at a concentration of 1 mg/mL, ready for conjugation. Created using Proteintech's proprietary in-house recombinant technology. Recombinant production enables unrivalled batch-to-batch consistency, easy scale-up, and future security of supply.

Matched antibody pairs are designed for use in a variety of assays and platforms that require matched antibody pairs.

Antibody use should be optimized for each application and assay.

Storage

Storage:
Store at -80°C.
The product is shipped with ice packs. Upon receipt, store it immediately at -80°C
Storage buffer:
PBS only

For technical support and original validation data for this product please contact:

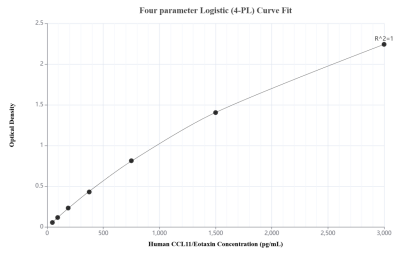
T: 4006900926

E: Proteintech-CN@ptglab.com

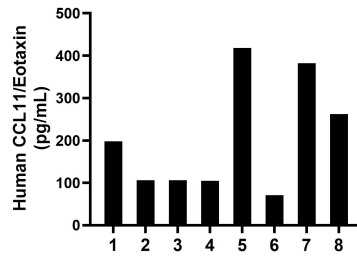
W: ptgcn.com

This product is exclusively available under Proteintech Group brand and is not available to purchase from any other manufacturer.

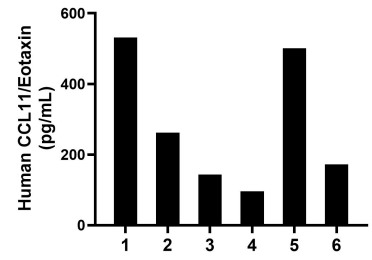
Selected Validation Data



Sandwich ELISA standard curve of MP03000-1, Human CCL11/Eotaxin Recombinant Matched Antibody Pair - PBS only. 87475-2-PBS was coated to a plate as the capture antibody and incubated with serial dilutions of standard Eg5095. 87475-1-PBS was HRP conjugated as the detection antibody. Range: 46.9-3000 pg/mL.



Serum of eight individual healthy human donors was measured. The CCL11/Eotaxin concentration of detected samples was determined to be 206.0 pg/mL with a range of 70.9-418.0 pg/mL.



Plasma of six individual healthy human donors was measured. The CCL11/Eotaxin concentration of detected samples was determined to be 284.4 pg/mL with a range of 95.7-531.2 pg/mL.