

For Research Use Only

KLK14 Recombinant Matched Antibody Pair, PBS Only



Catalog Number:MP02991-1

Capture Antibody Information

Catalog Number:
85809-2-PBS
Host:
Rabbit
Isotype:
IgG
Purification Method:
Protein A purification

Clone ID:
243023D9
Reactivity:
human
GenBank:
NM_022046.5
Immunogen Catalog Number:
Eg2472

Conjugate:
Unconjugated
Full name:
kallikrein-related peptidase 14
Gene ID:
43847

Detection Antibody Information

Catalog Number:
85809-1-PBS
Host:
Rabbit
Isotype:
IgG
Purification Method:
Protein A purification

Clone ID:
243023F6
Reactivity:
human
GenBank:
NM_022046.5
Immunogen Catalog Number:
Eg2472

Conjugate:
Unconjugated
Full name:
kallikrein-related peptidase 14
Gene ID:
43847

Applications

Tested Applications:
Sandwich ELISA

Range:
0.156-10 ng/mL (Sandwich ELISA)

Recommended Dilutions:
It is recommended that this reagent should be titrated in each testing system to obtain optimal results.

Product Information

MP02991-1 targets KLK14 in immunoassays as a matched antibody pair. Validated in Sandwich ELISA.

Capture antibody: KLK14 Recombinant monoclonal antibody, PBS Only (Capture) 85809-2-PBS (243023D9). 100 µg. Concentration 1 mg/mL.

Detection antibody: KLK14 Recombinant monoclonal antibody, PBS Only (Detector) 85809-1-PBS (243023F6). 100 µg. Concentration 1 mg/mL.

Unconjugated rabbit recombinant monoclonal antibody pair in PBS only storage buffer at a concentration of 1 mg/mL, ready for conjugation. Created using Proteintech's proprietary in-house recombinant technology. Recombinant production enables unrivalled batch-to-batch consistency, easy scale-up, and future security of supply.

Matched antibody pairs are designed for use in a variety of assays and platforms that require matched antibody pairs.

Antibody use should be optimized for each application and assay.

Storage

Storage:
Store at -80°C.
The product is shipped with ice packs. Upon receipt, store it immediately at -80°C
Storage buffer:
PBS only

For technical support and original validation data for this product please contact:

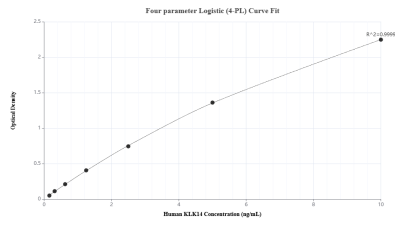
T: 4006900926

E: Proteintech-CN@ptglab.com

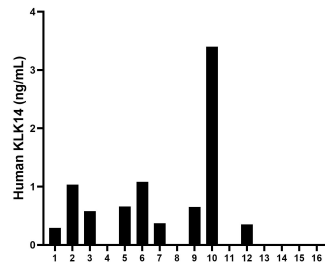
W: ptgcn.com

This product is exclusively available under Proteintech Group brand and is not available to purchase from any other manufacturer.

Selected Validation Data



Sandwich ELISA standard curve of MP02991-1, Human KLK14 Recombinant Matched Antibody Pair - PBS only. 85809-2-PBS was coated to a plate as the capture antibody and incubated with serial dilutions of standard Eg2472. 85809-1-PBS was HRP conjugated as the detection antibody. Range: 0.156-10 ng/mL



Plasma of sixteen individual healthy human donors was measured. The human KLK14 concentration of detected samples was determined to be 0.94 ng/mL with a range of ND - 3.40 ng/mL