

For Research Use Only

ARPC1B Recombinant Matched Antibody Pair, PBS Only



Catalog Number:MP02990-1

Capture Antibody Information

Catalog Number:
87393-1-PBS
Host:
Rabbit
Isotype:
IgG
Purification Method:
Protein A purification

Clone ID:
252807F12
Reactivity:
human, mouse, rat
GenBank:
BC007555
Immunogen Catalog Number:
Ag29001

Conjugate:
Unconjugated
Full name:
actin related protein 2/3 complex, subunit 1B, 41kDa
Gene ID:
10095

Detection Antibody Information

Catalog Number:
87393-3-PBS
Host:
Rabbit
Isotype:
IgG
Purification Method:
Protein A purification

Clone ID:
252807E4
Reactivity:
human
GenBank:
BC007555
Immunogen Catalog Number:
Ag29001

Conjugate:
Unconjugated
Full name:
actin related protein 2/3 complex, subunit 1B, 41kDa
Gene ID:
10095

Applications

Tested Applications:
Cytometric bead array

Range:
0.781-100 ng/mL (Cytometric Bead Array)

Recommended Dilutions:
It is recommended that this reagent should be titrated in each testing system to obtain optimal results.

Product Information

MP02990-1 targets ARPC1B in immunoassays as a matched antibody pair. Validated in Cytometric bead array.

Capture antibody: ARPC1B Recombinant monoclonal antibody, PBS Only (Capture) 87393-1-PBS (252807F12). 100 μ g. Concentration 1 mg/mL.

Detection antibody: ARPC1B Recombinant monoclonal antibody, PBS Only (Detector) 87393-3-PBS (252807E4). 100 μ g. Concentration 1 mg/mL.

Unconjugated rabbit recombinant monoclonal antibody pair in PBS only storage buffer at a concentration of 1 mg/mL, ready for conjugation. Created using Proteintech's proprietary in-house recombinant technology. Recombinant production enables unrivalled batch-to-batch consistency, easy scale-up, and future security of supply.

Matched antibody pairs are designed for use in a variety of assays and platforms that require matched antibody pairs.

Antibody use should be optimized for each application and assay.

Storage

Storage:
Store at -80°C.
The product is shipped with ice packs. Upon receipt, store it immediately at -80°C
Storage buffer:
PBS only

For technical support and original validation data for this product please contact:

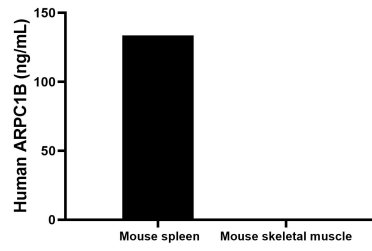
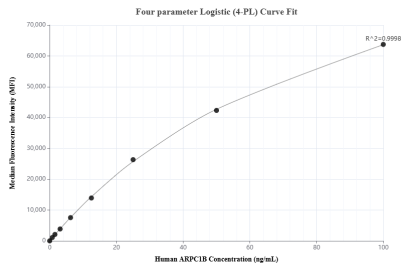
T: 4006900926

E: Proteintech-CN@ptglab.com

W: ptgcn.com

This product is exclusively available under Proteintech Group brand and is not available to purchase from any other manufacturer.

Selected Validation Data



Cytometric bead array standard curve of MPO2990-1, ARPC1B Recombinant Matched Antibody Pair, PBS Only. Capture antibody: 87393-1-PBS. Detection antibody: 87393-3-PBS. Standard: Ag29001. Range: 0.781-100 ng/mL

The mean ARPC1B concentration was determined to be 133.6 ng/mL in Mouse spleen tissue extract based on a 6.4 mg/mL extract load, Mouse skeletal muscle tissue extract were served as a negative control.