

For Research Use Only



# TRIM16 Recombinant Matched Antibody Pair, PBS Only

Catalog Number:MP02988-1

## Capture Antibody Information

**Catalog Number:**  
87377-3-PBS  
**Host:**  
Rabbit  
**Isotype:**  
IgG  
**Purification Method:**  
Protein A purification

**Clone ID:**  
252519D5  
**Reactivity:**  
human  
**GenBank:**  
BC015674  
**Immunogen Catalog Number:**  
Ag21406

**Conjugate:**  
Unconjugated  
**Full name:**  
tripartite motif-containing 16  
**Gene ID:**  
10626

## Detection Antibody Information

**Catalog Number:**  
87377-2-PBS  
**Host:**  
Rabbit  
**Isotype:**  
IgG  
**Purification Method:**  
Protein A purification

**Clone ID:**  
252519E10  
**Reactivity:**  
human  
**GenBank:**  
BC015674  
**Immunogen Catalog Number:**  
Ag21406

**Conjugate:**  
Unconjugated  
**Full name:**  
tripartite motif-containing 16  
**Gene ID:**  
10626

## Applications

**Tested Applications:**  
Cytometric bead array

**Range:**  
1.562-200 ng/mL (Cytometric Bead Array)

**Recommended Dilutions:**  
It is recommended that this reagent should be titrated in each testing system to obtain optimal results.

## Product Information

MP02988-1 targets TRIM16 in immunoassays as a matched antibody pair. Validated in Cytometric bead array.

Capture antibody: TRIM16 Recombinant monoclonal antibody, PBS Only (Capture) 87377-3-PBS (252519D5). 100 µg. Concentration 1 mg/ml.

Detection antibody: TRIM16 Recombinant monoclonal antibody, PBS Only (Detector) 87377-2-PBS (252519E10). 100 µg. Concentration 1 mg/ml.

Unconjugated rabbit recombinant monoclonal antibody pair in PBS only storage buffer at a concentration of 1 mg/mL, ready for conjugation. Created using Proteintech's proprietary in-house recombinant technology. Recombinant production enables unrivalled batch-to-batch consistency, easy scale-up, and future security of supply.

Matched antibody pairs are designed for use in a variety of assays and platforms that require matched antibody pairs.

Antibody use should be optimized for each application and assay.

## Storage

**Storage:**  
Store at -80°C.  
**The product is shipped with ice packs. Upon receipt, store it immediately at -80°C**  
**Storage buffer:**  
PBS only

For technical support and original validation data for this product please contact:

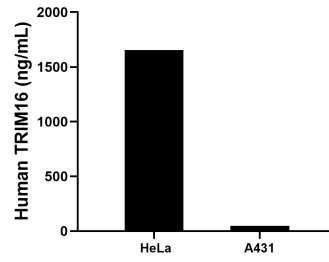
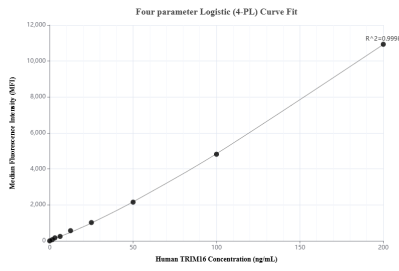
T: 4006900926

E: Proteintech-CN@ptglab.com

W: ptgcn.com

**This product is exclusively available under Proteintech Group brand and is not available to purchase from any other manufacturer.**

## Selected Validation Data



Cytometric bead array standard curve of MPO2988-1, TRIM16 Recombinant Matched Antibody Pair, PBS Only. Capture antibody: 87377-3-PBS. Detection antibody: 87377-2-PBS. Standard: Ag21406. Range: 1.562-200 ng/mL.

The mean TRIM16 concentration was determined to be 1654.2 ng/mL in HeLa cell extract based on a 1.2 mg/mL extract load, 47.9 ng/mL in A431 cell extract based on a 1.2 mg/mL extract load.