

# EPHA1 Recombinant Matched Antibody Pair, PBS Only

Catalog Number:MP02981-1

## Capture Antibody Information

Catalog Number:  
87362-3-PBS

Host:  
Rabbit

Isotype:  
IgG

Purification Method:  
Protein A purification

Clone ID:  
252393D3

Reactivity:  
human

GenBank:  
NM\_005232.4

Immunogen Catalog Number:  
Eg5474

Conjugate:  
Unconjugated

Full name:  
EPH receptor A1

Gene ID:  
2041

## Detection Antibody Information

Catalog Number:  
87362-2-PBS

Host:  
Rabbit

Isotype:  
IgG

Purification Method:  
Protein A purification

Clone ID:  
252393C12

Reactivity:  
human

GenBank:  
NM\_005232.4

Immunogen Catalog Number:  
Eg5474

Conjugate:  
Unconjugated

Full name:  
EPH receptor A1

Gene ID:  
2041

## Applications

Tested Applications:  
Cytometric bead array

Range:  
0.156-20 ng/mL (Cytometric Bead Array)

Recommended Dilutions:  
It is recommended that this reagent should be titrated in each testing system to obtain optimal results.

## Product Information

MP02981-1 targets EPHA1 in immunoassays as a matched antibody pair. Validated in Cytometric bead array.

Capture antibody: EPHA1 Recombinant monoclonal antibody, PBS Only (Capture) 87362-3-PBS (252393D3). 100 µg. Concentration 1 mg/mL.

Detection antibody: EPHA1 Recombinant monoclonal antibody, PBS Only (Detector) 87362-2-PBS (252393C12). 100 µg. Concentration 1 mg/mL.

Unconjugated rabbit recombinant monoclonal antibody pair in PBS only storage buffer at a concentration of 1 mg/mL, ready for conjugation. Created using Proteintech's proprietary in-house recombinant technology. Recombinant production enables unrivalled batch-to-batch consistency, easy scale-up, and future security of supply.

Matched antibody pairs are designed for use in a variety of assays and platforms that require matched antibody pairs.

Antibody use should be optimized for each application and assay.

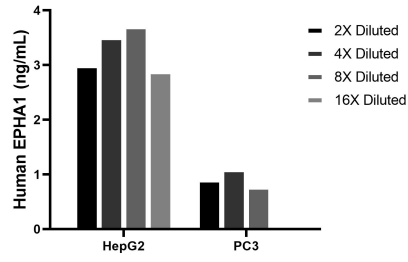
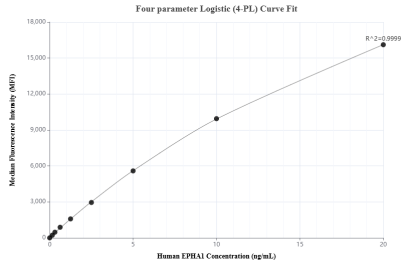
## Storage

Storage:  
Store at -80°C.

The product is shipped with ice packs. Upon receipt, store it immediately at -80°C

Storage buffer:  
PBS only

## Selected Validation Data



Cytometric bead array standard curve of MPO2981-1, EPHA1 Recombinant Matched Antibody Pair, PBS Only. Capture antibody: 87362-3-PBS. Detection antibody: 87362-2-PBS. Standard: Eg5474. Range: 0.156-20 ng/mL

The mean EPHA1 concentration was determined to be 3.3 ng/mL in HepG2 cell extract based on a 1.2 mg/mL extract load, 0.9 ng/mL in PC3 cell extract based on a 1.2 mg/mL extract load.