

For Research Use Only

# INPP5F Recombinant Matched Antibody Pair, PBS Only



Catalog Number:MP02978-2

## Capture Antibody Information

**Catalog Number:**  
87311-4-PBS  
**Host:**  
Rabbit  
**Isotype:**  
IgG  
**Purification Method:**  
Protein A purification

**Clone ID:**  
252661A4  
**Reactivity:**  
human  
**GenBank:**  
BC111493  
**Immunogen Catalog Number:**  
Ag39933

**Conjugate:**  
Unconjugated  
**Full name:**  
inositol polyphosphate-5-phosphatase F  
**Gene ID:**  
22876

## Detection Antibody Information

**Catalog Number:**  
87311-1-PBS  
**Host:**  
Rabbit  
**Isotype:**  
IgG  
**Purification Method:**  
Protein A purification

**Clone ID:**  
252661F2  
**Reactivity:**  
human, mouse, rat  
**GenBank:**  
BC111493  
**Immunogen Catalog Number:**  
Ag39933

**Conjugate:**  
Unconjugated  
**Full name:**  
inositol polyphosphate-5-phosphatase F  
**Gene ID:**  
22876

## Applications

**Tested Applications:**  
Sandwich ELISA

**Range:**  
0.156-10 ng/mL (Sandwich ELISA)

**Recommended Dilutions:**  
It is recommended that this reagent should be titrated in each testing system to obtain optimal results.

## Product Information

MP02978-2 targets INPP5F in immunoassays as a matched antibody pair. Validated in Sandwich ELISA.

Capture antibody: INPP5F Recombinant monoclonal antibody, PBS Only (Capture) 87311-4-PBS (252661A4). 100  $\mu$ g. Concentration 1 mg/mL.

Detection antibody: INPP5F Recombinant monoclonal antibody, PBS Only (Detector) 87311-1-PBS (252661F2). 100  $\mu$ g. Concentration 1 mg/mL.

Unconjugated rabbit recombinant monoclonal antibody pair in PBS only storage buffer at a concentration of 1 mg/mL, ready for conjugation. Created using Proteintech's proprietary in-house recombinant technology. Recombinant production enables unrivalled batch-to-batch consistency, easy scale-up, and future security of supply.

Matched antibody pairs are designed for use in a variety of assays and platforms that require matched antibody pairs.

Antibody use should be optimized for each application and assay.

## Storage

**Storage:**  
Store at -80°C.  
**The product is shipped with ice packs. Upon receipt, store it immediately at -80°C**  
**Storage buffer:**  
PBS only

For technical support and original validation data for this product please contact:

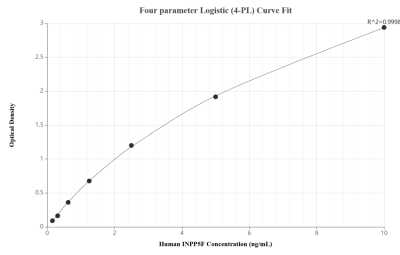
T: 4006900926

E: [Proteintech-CN@ptglab.com](mailto:Proteintech-CN@ptglab.com)

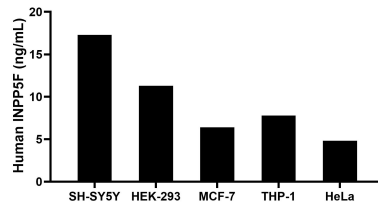
W: [ptgcn.com](http://ptgcn.com)

**This product is exclusively available under Proteintech Group brand and is not available to purchase from any other manufacturer.**

## Selected Validation Data



Sandwich ELISA standard curve of MP02978-2, Human INPP5F Recombinant Matched Antibody Pair - PBS only. 87311-4-PBS was coated to a plate as the capture antibody and incubated with serial dilutions of standard Ag39933. 87311-1-PBS was HRP conjugated as the detection antibody. Range: 0.156-10 ng/mL



The mean INPP5F concentration was determined to be 17.30 ng/mL in SH-SY5Y cell extract based on a 1.20 mg/mL extract load, 11.30 ng/mL in HEK-293 cell extract based on a 1.20 mg/mL extract load, 6.40 ng/mL in MCF-7 cell extract based on a 1.20 mg/mL extract load, 7.80 ng/mL in THP-1 cell extract based on a 1.20 mg/mL extract load, and 4.80 ng/mL in HeLa cell extract based on a 1.20 mg/mL extract load.