

# Laminin beta 1 Recombinant Matched Antibody Pair, PBS Only

Catalog Number: **MP02972-1**

## Capture Antibody Information

**Catalog Number:**

86881-1-PBS

**Host:**

Rabbit

**Isotype:**

IgG

**Purification Method:**

Protein A purification

**Clone ID:**

251869B1

**Reactivity:**

human, mouse

**GenBank:**

BC113455

**Immunogen Catalog Number:**

Ag19182

**Conjugate:**

Unconjugated

**Full name:**

laminin, beta 1

**Gene ID:**

3912

## Detection Antibody Information

**Catalog Number:**

86881-2-PBS

**Host:**

Rabbit

**Isotype:**

IgG

**Purification Method:**

Protein A purification

**Clone ID:**

251869F10

**Reactivity:**

human

**GenBank:**

BC113455

**Immunogen Catalog Number:**

Ag19182

**Conjugate:**

Unconjugated

**Full name:**

laminin, beta 1

**Gene ID:**

3912

## Applications

**Tested Applications:**

Sandwich ELISA

**Range:**

78.1-5000 pg/mL (Sandwich ELISA)

**Recommended Dilutions:**

It is recommended that this reagent should be titrated in each testing system to obtain optimal results.

## Product Information

MP02972-1 targets Laminin beta 1 in immunoassays as a matched antibody pair. Validated in Sandwich ELISA.

Capture antibody: Laminin beta 1 Recombinant monoclonal antibody, PBS Only (Capture) 86881-1-PBS (251869B1). 100 µg. Concentration 1 mg/mL.

Detection antibody: LAMB1 Recombinant monoclonal antibody, PBS Only (Detector) 86881-2-PBS (251869F10). 100 µg. Concentration 1 mg/mL.

Unconjugated rabbit recombinant monoclonal antibody pair in PBS only storage buffer at a concentration of 1 mg/mL, ready for conjugation. Created using Proteintech's proprietary in-house recombinant technology. Recombinant production enables unrivalled batch-to-batch consistency, easy scale-up, and future security of supply.

Matched antibody pairs are designed for use in a variety of assays and platforms that require matched antibody pairs.

Antibody use should be optimized for each application and assay.

## Storage

**Storage:**

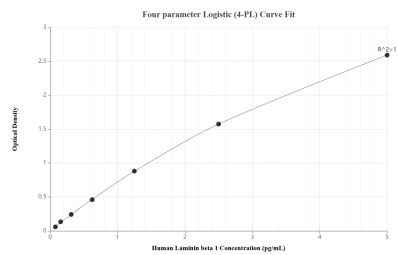
Store at -80°C.

**The product is shipped with ice packs. Upon receipt, store it immediately at -80°C**

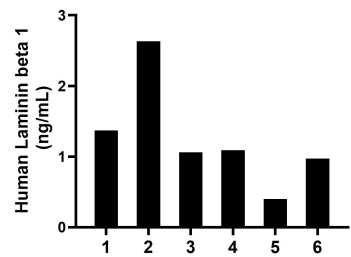
**Storage buffer:**

PBS only

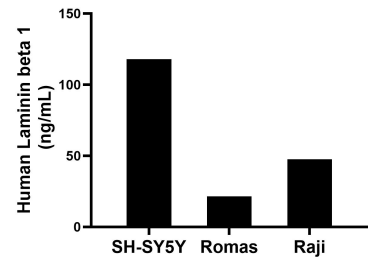
## Selected Validation Data



Sandwich ELISA standard curve of MP02972-1, Human Laminin beta 1 Recombinant Matched Antibody Pair - PBS only. 86881-1-PBS was coated to a plate as the capture antibody and incubated with serial dilutions of standard Ag19182. 86881-2-PBS was HRP conjugated as the detection antibody. Range: 78.1-5000 pg/mL.



Serum of six individual healthy human donors was measured. The Laminin beta 1 concentration of detected samples was determined to be 1.3 ng/mL with a range of 0.4-2.6 ng/mL.



The mean Laminin beta 1 concentration was determined to be 118.0 ng/mL in SH-SY5Y cell extract based on a 1.2 mg/mL extract load, 21.5 ng/mL in Ramos cell extract based on a 2.3 mg/mL extract load and 47.6 ng/mL in Raji cell extract based on a 1.5 mg/mL extract load.