

For Research Use Only

HMGA2 Recombinant Matched Antibody Pair, PBS Only



Catalog Number:MP02971-1

Capture Antibody Information

Catalog Number:
87021-4-PBS

Host:
Rabbit

Isotype:
IgG

Purification Method:
Protein A purification

Clone ID:
252110H2

Reactivity:
human

GenBank:
NM_003483

Immunogen Catalog Number:
Ag14588

Conjugate:
Unconjugated

Full name:
high mobility group AT-hook 2

Gene ID:
8091

Detection Antibody Information

Catalog Number:
87021-3-PBS

Host:
Rabbit

Isotype:
IgG

Purification Method:
Protein A purification

Clone ID:
252110B4

Reactivity:
human

GenBank:
NM_003483

Immunogen Catalog Number:
Ag14588

Conjugate:
Unconjugated

Full name:
high mobility group AT-hook 2

Gene ID:
8091

Applications

Tested Applications:
Sandwich ELISA

Range:
0.781-12.5 ng/mL (Sandwich ELISA)

Recommended Dilutions:
It is recommended that this reagent should be titrated in each testing system to obtain optimal results.

Product Information

MP02971-1 targets HMGA2 in immunoassays as a matched antibody pair. Validated in Sandwich ELISA.

Capture antibody: HMGA2 Recombinant monoclonal antibody, PBS Only (Capture) 87021-4-PBS (252110H2). 100 μ g. Concentration 1 mg/ml.

Detection antibody: HMGA2 Recombinant monoclonal antibody, PBS Only (Detector) 87021-3-PBS (252110B4). 100 μ g. Concentration 1 mg/ml.

Unconjugated rabbit recombinant monoclonal antibody pair in PBS only storage buffer at a concentration of 1 mg/mL, ready for conjugation. Created using Proteintech's proprietary in-house recombinant technology. Recombinant production enables unrivalled batch-to-batch consistency, easy scale-up, and future security of supply.

Matched antibody pairs are designed for use in a variety of assays and platforms that require matched antibody pairs.

Antibody use should be optimized for each application and assay.

Storage

Storage:
Store at -80°C.

The product is shipped with ice packs. Upon receipt, store it immediately at -80°C

Storage buffer:
PBS only

For technical support and original validation data for this product please contact:

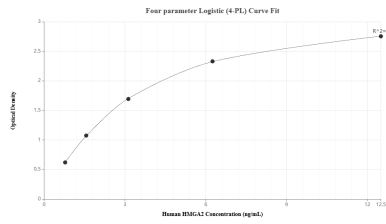
T: 4006900926

E: Proteintech-CN@ptglab.com

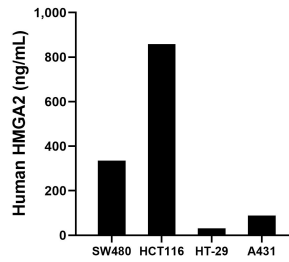
W: ptgcn.com

This product is exclusively available under Proteintech Group brand and is not available to purchase from any other manufacturer.

Selected Validation Data



Sandwich ELISA standard curve of MP02971-1, Human HMGA2 Recombinant Matched Antibody Pair - PBS only. 87021-4-PBS was coated to a plate as the capture antibody and incubated with serial dilutions of standard Ag14588. 87021-3-PBS was HRP conjugated as the detection antibody. Range: 0.781-12.5 ng/mL



The mean HMGA2 concentration was determined to be 335.16 ng/mL in SW480 cell extract based on a 3.0 mg/mL extract load, 859.24 ng/mL in HCT116 cell extract based on a 1.3 mg/mL extract load, 31.20 ng/mL in HT-29 cell extract based on a 1.1 mg/mL extract load and 88.90 ng/mL in A431 cell extract based on a 1.2 mg/mL extract load.