

For Research Use Only

Syntenin-1 Recombinant Matched Antibody Pair, PBS Only



Catalog Number:MP02969-1

Capture Antibody Information

Catalog Number:
86968-2-PBS

Host:
Rabbit

Isotype:
IgG

Purification Method:
Protein A purification

Clone ID:
252107G12

Reactivity:
human

GenBank:
BC113674

Immunogen Catalog Number:
Ag18078

Conjugate:
Unconjugated

Full name:
syndecan binding protein (syntenin)

Gene ID:
6386

Detection Antibody Information

Catalog Number:
86968-1-PBS

Host:
Rabbit

Isotype:
IgG

Purification Method:
Protein A purification

Clone ID:
252107H1

Reactivity:
human

GenBank:
BC113674

Immunogen Catalog Number:
Ag18078

Conjugate:
Unconjugated

Full name:
syndecan binding protein (syntenin)

Gene ID:
6386

Applications

Tested Applications:
Sandwich ELISA

Range:
1.56-100 ng/mL (Sandwich ELISA)

Recommended Dilutions:
It is recommended that this reagent should be titrated in each testing system to obtain optimal results.

Product Information

MP02969-1 targets Syntenin-1 in immunoassays as a matched antibody pair. Validated in Sandwich ELISA.

Capture antibody: SDCBP Recombinant monoclonal antibody, PBS Only (Capture) 86968-2-PBS (252107G12). 100 μ g. Concentration 1 mg/mL.

Detection antibody: Syntenin-1 Recombinant monoclonal antibody, PBS Only (Detector) 86968-1-PBS (252107H1). 100 μ g. Concentration 1 mg/mL.

Unconjugated rabbit recombinant monoclonal antibody pair in PBS only storage buffer at a concentration of 1 mg/mL, ready for conjugation. Created using Proteintech's proprietary in-house recombinant technology. Recombinant production enables unrivalled batch-to-batch consistency, easy scale-up, and future security of supply.

Matched antibody pairs are designed for use in a variety of assays and platforms that require matched antibody pairs.

Antibody use should be optimized for each application and assay.

Storage

Storage:

Store at -80°C.

The product is shipped with ice packs. Upon receipt, store it immediately at -80°C

Storage buffer:

PBS only

For technical support and original validation data for this product please contact:

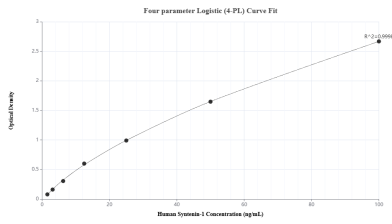
T: 4006900926

E: Proteintech-CN@ptglab.com

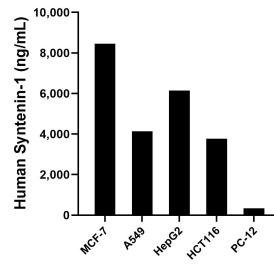
W: ptgcn.com

This product is exclusively available under Proteintech Group brand and is not available to purchase from any other manufacturer.

Selected Validation Data



Sandwich ELISA standard curve of MP02969-1, Human Syntenin-1 Recombinant Matched Antibody Pair - PBS only. 86968-2-PBS was coated to a plate as the capture antibody and incubated with serial dilutions of standard Ag18078. 86968-1-PBS was HRP conjugated as the detection antibody. Range: 1.56-100 ng/mL



The mean Syntenin-1 concentration was determined to be 8,459.69 ng/mL in MCF-7 cell extract based on a 1.2 mg/mL extract load, 4,141.00 ng/mL in A549 cell extract based on a 1.2 mg/mL extract load, 6,144.14 ng/mL in HepG2 cell extract based on a 1.2 mg/mL extract load, 3,765.64 ng/mL in HCT 116 cell extract based on a 1.3 mg/mL extract load and 339.31 ng/mL in PC-12 cell extract based on a 1.4 mg/mL extract load.