

For Research Use Only

# RPS6KB2 Recombinant Matched Antibody Pair, PBS Only



Catalog Number:MP02968-1

## Capture Antibody Information

**Catalog Number:**  
86983-3-PBS  
**Host:**  
Rabbit  
**Isotype:**  
IgG  
**Purification Method:**  
Protein A purification

**Clone ID:**  
252089E1  
**Reactivity:**  
human  
**GenBank:**  
BC000094  
**Immunogen Catalog Number:**  
Ag7371

**Conjugate:**  
Unconjugated  
**Full name:**  
ribosomal protein S6 kinase, 70kDa, polypeptide 2  
**Gene ID:**  
6199

## Detection Antibody Information

**Catalog Number:**  
86983-2-PBS  
**Host:**  
Rabbit  
**Isotype:**  
IgG  
**Purification Method:**  
Protein A purification

**Clone ID:**  
252089D4  
**Reactivity:**  
human  
**GenBank:**  
BC000094  
**Immunogen Catalog Number:**  
Ag7371

**Conjugate:**  
Unconjugated  
**Full name:**  
ribosomal protein S6 kinase, 70kDa, polypeptide 2  
**Gene ID:**  
6199

## Applications

**Tested Applications:**  
Sandwich ELISA

**Range:**  
0.78-50 ng/mL (Sandwich ELISA)

**Recommended Dilutions:**  
It is recommended that this reagent should be titrated in each testing system to obtain optimal results.

## Product Information

MP02968-1 targets RPS6KB2 in immunoassays as a matched antibody pair. Validated in Sandwich ELISA.

Capture antibody: RPS6KB2 Recombinant monoclonal antibody, PBS Only (Capture) 86983-3-PBS (252089E1). 100 µg. Concentration 1 mg/mL.

Detection antibody: RPS6KB2 Recombinant monoclonal antibody, PBS Only (Detector) 86983-2-PBS (252089D4). 100 µg. Concentration 1 mg/mL.

Unconjugated rabbit recombinant monoclonal antibody pair in PBS only storage buffer at a concentration of 1 mg/mL, ready for conjugation. Created using Proteintech's proprietary in-house recombinant technology. Recombinant production enables unrivalled batch-to-batch consistency, easy scale-up, and future security of supply.

Matched antibody pairs are designed for use in a variety of assays and platforms that require matched antibody pairs.

Antibody use should be optimized for each application and assay.

## Storage

**Storage:**  
Store at -80°C.  
**The product is shipped with ice packs. Upon receipt, store it immediately at -80°C**  
**Storage buffer:**  
PBS only

For technical support and original validation data for this product please contact:

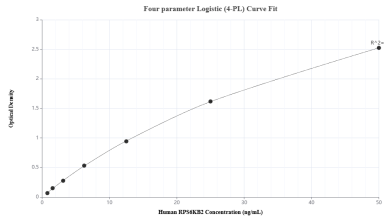
T: 4006900926

E: Proteintech-CN@ptglab.com

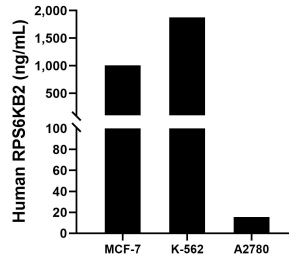
W: ptgcn.com

**This product is exclusively available under Proteintech Group brand and is not available to purchase from any other manufacturer.**

## Selected Validation Data



Sandwich ELISA standard curve of MP02968-1, Human RPS6KB2 Recombinant Matched Antibody Pair - PBS only. 86983-3-PBS was coated to a plate as the capture antibody and incubated with serial dilutions of standard Ag7371. 86983-2-PBS was HRP conjugated as the detection antibody. Range: 0.78-50 ng/mL



The mean RPS6KB2 concentration was determined to be 1,008.41 ng/mL in MCF-7 cell extract based on a 1.2 mg/mL extract load, 1,876.10 ng/mL in K-562 cell extract based on a 1.2 mg/mL extract load and 15.50 ng/mL in A2780 cell extract based on a 1.2 mg/mL extract load.