

For Research Use Only

OTUD6B Recombinant Matched Antibody Pair, PBS Only



Catalog Number:MP02964-1

Capture Antibody Information

Catalog Number:
87049-1-PBS

Host:
Rabbit

Isotype:
IgG

Purification Method:
Protein A purification

Clone ID:
251982E6

Reactivity:
human

GenBank:
BC029760

Immunogen Catalog Number:
Ag22044

Conjugate:
Unconjugated

Full name:
OTU domain containing 6B

Gene ID:
51633

Detection Antibody Information

Catalog Number:
87049-2-PBS

Host:
Rabbit

Isotype:
IgG

Purification Method:
Protein A purification

Clone ID:
251982B2

Reactivity:
human

GenBank:
BC029760

Immunogen Catalog Number:
Ag22044

Conjugate:
Unconjugated

Full name:
OTU domain containing 6B

Gene ID:
51633

Applications

Tested Applications:
Cytometric bead array

Range:
0.781-100 ng/mL (Cytometric Bead Array)

Recommended Dilutions:
It is recommended that this reagent should be titrated in each testing system to obtain optimal results.

Product Information

MP02964-1 targets OTUD6B in immunoassays as a matched antibody pair. Validated in Cytometric bead array.

Capture antibody: OTUD6B Recombinant monoclonal antibody, PBS Only (Capture) 87049-1-PBS (251982E6). 100 μ g. Concentration 1 mg/mL.

Detection antibody: OTUD6B Recombinant monoclonal antibody, PBS Only (Detector) 87049-2-PBS (251982B2). 100 μ g. Concentration 1 mg/mL.

Unconjugated rabbit recombinant monoclonal antibody pair in PBS only storage buffer at a concentration of 1 mg/mL, ready for conjugation. Created using Proteintech's proprietary in-house recombinant technology. Recombinant production enables unrivalled batch-to-batch consistency, easy scale-up, and future security of supply.

Matched antibody pairs are designed for use in a variety of assays and platforms that require matched antibody pairs.

Antibody use should be optimized for each application and assay.

Storage

Storage:

Store at -80°C.

The product is shipped with ice packs. Upon receipt, store it immediately at -80°C

Storage buffer:

PBS only

For technical support and original validation data for this product please contact:

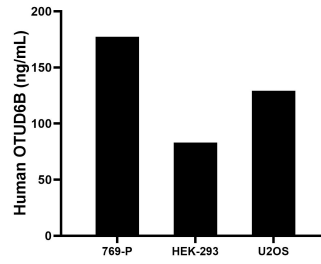
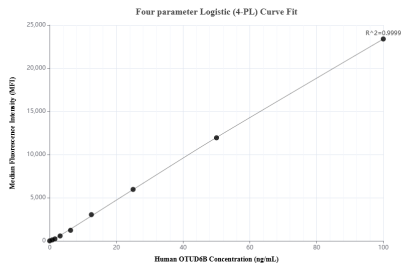
T: 4006900926

E: Proteintech-CN@ptglab.com

W: ptgcn.com

This product is exclusively available under Proteintech Group brand and is not available to purchase from any other manufacturer.

Selected Validation Data



Cytometric bead array standard curve of MPO2964-1, OTUD6B Recombinant Matched Antibody Pair, PBS Only. Capture antibody: 87049-1-PBS. Detection antibody: 87049-2-PBS. Standard: Ag22044. Range: 0.781-100 ng/mL

The mean OTUD6B concentration was determined to be 177.4 ng/mL in 769-P cell extract based on a 1.2 mg/mL extract load, 83.1 ng/mL in HEK-293 cell extract based on a 1.2 mg/mL extract load, 129.1 ng/mL in U2OS cell extract based on a 1.2 mg/mL extract load.