

For Research Use Only

# COL8A1 Recombinant Matched Antibody Pair, PBS Only



Catalog Number:MP02961-1

## Capture Antibody Information

Catalog Number:  
87280-3-PBS

Host:  
Rabbit

Isotype:  
IgG

Purification Method:  
Protein A purification

Clone ID:  
252552A7

Reactivity:  
human

GenBank:  
BC013581

Immunogen Catalog Number:  
Ag10607

Conjugate:  
Unconjugated

Full name:  
collagen, type VIII, alpha 1

Gene ID:  
1295

## Detection Antibody Information

Catalog Number:  
87280-2-PBS

Host:  
Rabbit

Isotype:  
IgG

Purification Method:  
Protein A purification

Clone ID:  
252552B3

Reactivity:  
human

GenBank:  
BC013581

Immunogen Catalog Number:  
Ag10607

Conjugate:  
Unconjugated

Full name:  
collagen, type VIII, alpha 1

Gene ID:  
1295

## Applications

Tested Applications:  
Sandwich ELISA

Range:  
15.6-1000 pg/mL (Sandwich ELISA)

Recommended Dilutions:  
It is recommended that this reagent should be titrated in each testing system to obtain optimal results.

## Product Information

MP02961-1 targets COL8A1 in immunoassays as a matched antibody pair. Validated in Sandwich ELISA.

Capture antibody: COL8A1 Recombinant monoclonal antibody, PBS Only (Capture) 87280-3-PBS (252552A7). 100  $\mu$ g. Concentration 1 mg/mL.

Detection antibody: COL8A1 Recombinant monoclonal antibody, PBS Only (Detector) 87280-2-PBS (252552B3). 100  $\mu$ g. Concentration 1 mg/mL.

Unconjugated rabbit recombinant monoclonal antibody pair in PBS only storage buffer at a concentration of 1 mg/mL, ready for conjugation. Created using Proteintech's proprietary in-house recombinant technology. Recombinant production enables unrivalled batch-to-batch consistency, easy scale-up, and future security of supply.

Matched antibody pairs are designed for use in a variety of assays and platforms that require matched antibody pairs.

Antibody use should be optimized for each application and assay.

## Storage

Storage:  
Store at -80°C.

The product is shipped with ice packs. Upon receipt, store it immediately at -80°C

Storage buffer:  
PBS only

For technical support and original validation data for this product please contact:

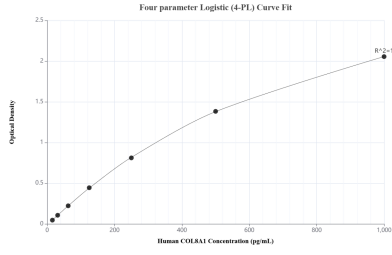
T: 4006900926

E: Proteintech-CN@ptglab.com

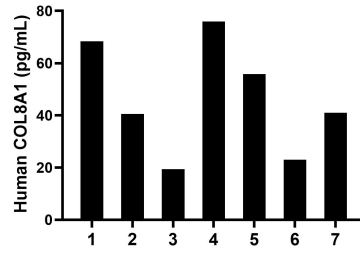
W: ptgcn.com

This product is exclusively available under Proteintech Group brand and is not available to purchase from any other manufacturer.

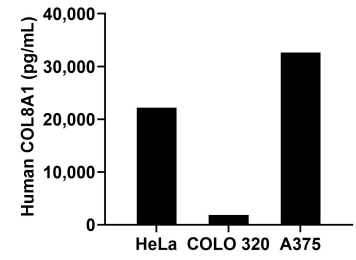
## Selected Validation Data



Sandwich ELISA standard curve of MP02961-1, Human COL8A1 Recombinant Matched Antibody Pair - PBS only. 87280-3-PBS was coated to a plate as the capture antibody and incubated with serial dilutions of standard Ag10607. 87280-2-PBS was HRP conjugated as the detection antibody. Range: 15.6-1000 pg/mL



Plasma of seven individual healthy human donors was measured. The COL8A1 concentration of detected samples was determined to be 46.3 pg/mL with a range of 19.4-75.9 pg/mL



The mean COL8A1 concentration was determined to be 22,162.3 pg/mL in HeLa cell extract based on a 1.2 mg/mL extract load, 1,857.3 pg/mL in COLO 320 cell extract based on a 1.2 mg/mL extract load and 32,654.0 pg/mL in A375 cell extract based on a 1.6 mg/mL extract load.