

For Research Use Only

Annexin A1 Recombinant Matched Antibody Pair, PBS Only



Catalog Number:MP02960-1

Capture Antibody Information

Catalog Number:
87316-2-PBS

Host:
Rabbit

Isotype:
IgG

Purification Method:
Protein A purification

Clone ID:
251332A1

Reactivity:
human

GenBank:
NM_000700.3

Immunogen Catalog Number:
Eg4503

Conjugate:
Unconjugated

Full name:
annexin A1

Gene ID:
301

Detection Antibody Information

Catalog Number:
87316-1-PBS

Host:
Rabbit

Isotype:
IgG

Purification Method:
Protein A purification

Clone ID:
251332C11

Reactivity:
human

GenBank:
NM_000700.3

Immunogen Catalog Number:
Eg4503

Conjugate:
Unconjugated

Full name:
annexin A1

Gene ID:
301

Applications

Tested Applications:
Cytometric bead array

Range:
0.625-80 ng/mL (Cytometric Bead Array)

Recommended Dilutions:
It is recommended that this reagent should be titrated in each testing system to obtain optimal results.

Product Information

MP02960-1 targets Annexin A1 in immunoassays as a matched antibody pair. Validated in Cytometric bead array.

Capture antibody: Annexin A1 Recombinant monoclonal antibody, PBS Only (Capture) 87316-2-PBS (251332A1). 100 μ g. Concentration 1 mg/mL.

Detection antibody: Annexin A1 Recombinant monoclonal antibody, PBS Only (Capture/Detector) 87316-1-PBS (251332C11). 100 μ g. Concentration 1 mg/mL.

Unconjugated rabbit recombinant monoclonal antibody pair in PBS only storage buffer at a concentration of 1 mg/mL, ready for conjugation. Created using Proteintech's proprietary in-house recombinant technology. Recombinant production enables unrivalled batch-to-batch consistency, easy scale-up, and future security of supply.

Matched antibody pairs are designed for use in a variety of assays and platforms that require matched antibody pairs.

Antibody use should be optimized for each application and assay.

Storage

Storage:
Store at -80°C.

The product is shipped with ice packs. Upon receipt, store it immediately at -80°C

Storage buffer:
PBS only

For technical support and original validation data for this product please contact:

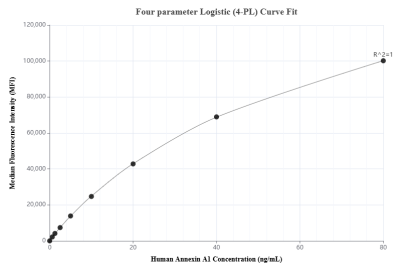
T: 4006900926

E: Proteintech-CN@ptglab.com

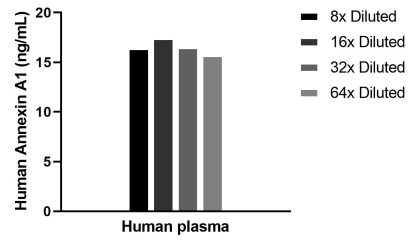
W: ptgcn.com

This product is exclusively available under Proteintech Group brand and is not available to purchase from any other manufacturer.

Selected Validation Data



Cytometric bead array standard curve of MP02960-1, Annexin A1 Recombinant Matched Antibody Pair, PBS Only. Capture antibody: 87316-2-PBS. Detection antibody: 87316-1-PBS. Standard: Eg4503. Range: 0.625-80 ng/mL.



The mean Annexin A1 concentration was determined to be 16.8 ng/mL in Human plasma.