

IgG4 Recombinant Matched Antibody Pair, PBS Only

Catalog Number:MP02951-1

Capture Antibody Information

Catalog Number:
87290-2-PBS
Host:
Rabbit
Isotype:
IgG
Purification Method:
Protein A purification

Clone ID:
251291B12
Reactivity:
human
GenBank:
Immunogen Catalog Number:
Eg6675

Conjugate:
Unconjugated
Full name:
immunoglobulin heavy constant gamma 4 (G4m marker)
Gene ID:
3503

Detection Antibody Information

Catalog Number:
87290-1-PBS
Host:
Rabbit
Isotype:
IgG
Purification Method:
Protein A purification

Clone ID:
251291E2
Reactivity:
human
GenBank:
Immunogen Catalog Number:
Eg6675

Conjugate:
Unconjugated
Full name:
immunoglobulin heavy constant gamma 4 (G4m marker)
Gene ID:
3503

Applications

Tested Applications:
Cytometric bead array

Range:
0.078-10 ng/mL (Cytometric Bead Array)

Recommended Dilutions:
It is recommended that this reagent should be titrated in each testing system to obtain optimal results.

Product Information

MP02951-1 targets IgG4 in immunoassays as a matched antibody pair. Validated in Cytometric bead array.

Capture antibody: Human IgG4 Recombinant monoclonal antibody, PBS Only (Capture) 87290-2-PBS (251291B12). 100 µg. Concentration 1 mg/mL.

Detection antibody: Human IgG4 Recombinant monoclonal antibody, PBS Only (Detector) 87290-1-PBS (251291E2). 100 µg. Concentration 1 mg/mL.

Unconjugated rabbit recombinant monoclonal antibody pair in PBS only storage buffer at a concentration of 1 mg/mL, ready for conjugation. Created using Proteintech's proprietary in-house recombinant technology. Recombinant production enables unrivalled batch-to-batch consistency, easy scale-up, and future security of supply.

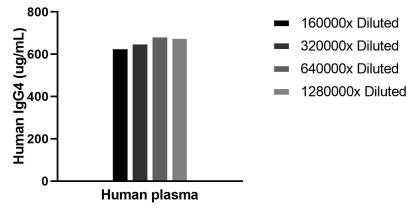
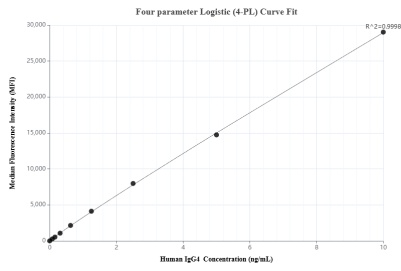
Matched antibody pairs are designed for use in a variety of assays and platforms that require matched antibody pairs.

Antibody use should be optimized for each application and assay.

Storage

Storage:
Store at -80°C.
The product is shipped with ice packs. Upon receipt, store it immediately at -80°C
Storage buffer:
PBS only

Selected Validation Data



The mean IgG4 concentration was determined to be 663.4 ug/mL in Human plasma.

Cytometric bead array standard curve of MP02951-1, IgG4 Recombinant Matched Antibody Pair, PBS Only. Capture antibody: 87290-2-PBS. Detection antibody: 87290-1-PBS. Standard: Eg6675. Range: 0.078-10 ng/mL