

PRKG1 Recombinant Matched Antibody Pair, PBS Only

Catalog Number: **MP02943-1**

Capture Antibody Information

Catalog Number: 85983-1-PBS	Clone ID: 250348B5	Conjugate: Unconjugated
Host: Rabbit	Reactivity: human, mouse, rat	Full name: protein kinase, cGMP-dependent, type I
Isotype: IgG	GenBank: BC127090	Gene ID: 5592
Purification Method: Protein A purification	Immunogen Catalog Number: Ag16333	

Detection Antibody Information

Catalog Number: 85983-2-PBS	Clone ID: 250348B12	Conjugate: Unconjugated
Host: Rabbit	Reactivity: human	Full name: protein kinase, cGMP-dependent, type I
Isotype: IgG	GenBank: BC127090	Gene ID: 5592
Purification Method: Protein A purification	Immunogen Catalog Number: Ag16333	

Applications

Tested Applications: Cytometric bead array	Range: 0.625-80 ng/mL (Cytometric Bead Array)	Recommended Dilutions: It is recommended that this reagent should be titrated in each testing system to obtain optimal results.
--	---	---

Product Information

MP02943-1 targets PRKG1 in immunoassays as a matched antibody pair. Validated in Cytometric bead array.

Capture antibody: PRKG1 Recombinant monoclonal antibody, PBS Only (Capture) 85983-1-PBS (250348B5). 100 µg. Concentration 1 mg/mL.

Detection antibody: PRKG1 Recombinant monoclonal antibody, PBS Only (Detector) 85983-2-PBS (250348B12). 100 µg. Concentration 1 mg/mL.

Unconjugated rabbit recombinant monoclonal antibody pair in PBS only storage buffer at a concentration of 1 mg/mL, ready for conjugation. Created using Proteintech's proprietary in-house recombinant technology. Recombinant production enables unrivalled batch-to-batch consistency, easy scale-up, and future security of supply.

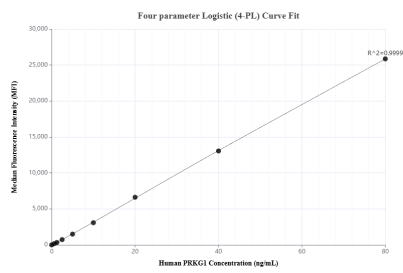
Matched antibody pairs are designed for use in a variety of assays and platforms that require matched antibody pairs.

Antibody use should be optimized for each application and assay.

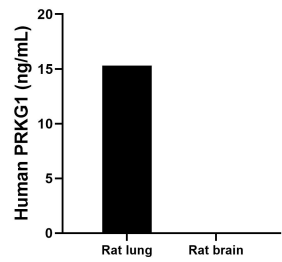
Storage

Storage:
Store at -80°C.
The product is shipped with ice packs. Upon receipt, store it immediately at -80°C
Storage buffer:
PBS only

Selected Validation Data



Cytometric bead array standard curve of MP02943-1, PRKG1 Recombinant Matched Antibody Pair, PBS Only. Capture antibody: 85983-1-PBS. Detection antibody: 85983-2-PBS. Standard: Ag16333. Range: 0.625-80 ng/mL



The mean PRKG1 concentration was determined to be 15.3 ng/mL in Rat lung tissue extract based on a 4.8 mg/mL extract load, Rat brain tissue extract were served as a negative control.