

For Research Use Only

MUL1 Recombinant Matched Antibody Pair, PBS Only



Catalog Number:MP02942-1

Capture Antibody Information

Catalog Number:
87235-2-PBS
Host:
Rabbit
Isotype:
IgG
Purification Method:
Protein A purification

Clone ID:
252482E1
Reactivity:
human
GenBank:
BC010101
Immunogen Catalog Number:
Ag9119

Conjugate:
Unconjugated
Full name:
mitochondrial E3 ubiquitin ligase 1
Gene ID:
79594

Detection Antibody Information

Catalog Number:
87235-1-PBS
Host:
Rabbit
Isotype:
IgG
Purification Method:
Protein A purification

Clone ID:
252482F6
Reactivity:
human
GenBank:
BC010101
Immunogen Catalog Number:
Ag9119

Conjugate:
Unconjugated
Full name:
mitochondrial E3 ubiquitin ligase 1
Gene ID:
79594

Applications

Tested Applications:
Sandwich ELISA

Range:
0.781-50 ng/mL (Sandwich ELISA)

Recommended Dilutions:
It is recommended that this reagent should be titrated in each testing system to obtain optimal results.

Product Information

MP02942-1 targets MUL1 in immunoassays as a matched antibody pair. Validated in Sandwich ELISA.

Capture antibody: MUL1 Recombinant monoclonal antibody, PBS Only (Capture) 87235-2-PBS (252482E1). 100 μ g. Concentration 1 mg/mL.

Detection antibody: MUL1 Recombinant monoclonal antibody, PBS Only (Detector) 87235-1-PBS (252482F6). 100 μ g. Concentration 1 mg/mL.

Unconjugated rabbit recombinant monoclonal antibody pair in PBS only storage buffer at a concentration of 1 mg/mL, ready for conjugation. Created using Proteintech's proprietary in-house recombinant technology. Recombinant production enables unrivalled batch-to-batch consistency, easy scale-up, and future security of supply.

Matched antibody pairs are designed for use in a variety of assays and platforms that require matched antibody pairs.

Antibody use should be optimized for each application and assay.

Storage

Storage:
Store at -80°C.
The product is shipped with ice packs. Upon receipt, store it immediately at -80°C
Storage buffer:
PBS only

For technical support and original validation data for this product please contact:

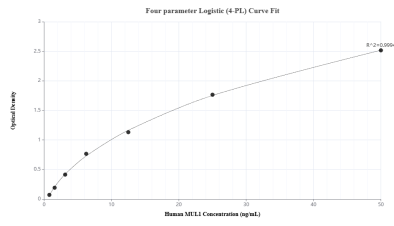
T: 4006900926

E: Proteintech-CN@ptglab.com

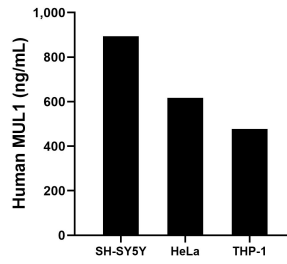
W: ptgcn.com

This product is exclusively available under Proteintech Group brand and is not available to purchase from any other manufacturer.

Selected Validation Data



Sandwich ELISA standard curve of MP02942-1, Human MUL1 Recombinant Matched Antibody Pair - PBS only. 87235-2-PBS was coated to a plate as the capture antibody and incubated with serial dilutions of standard Ag9119. 87235-1-PBS was HRP conjugated as the detection antibody. Range: 0.781-50 ng/mL



The mean MUL1 concentration was determined to be 893.20 ng/mL in SH-SY5Y cell extract based on a 1.2 mg/mL extract load, 617.00 ng/mL in HeLa cell extract based on a 1.2 mg/mL extract load and 477.35 ng/mL in THP-1 cell extract based on a 1.2 mg/mL extract load.