

For Research Use Only

SMAD5 Recombinant Matched Antibody Pair, PBS Only



Catalog Number: MP02940-1

Capture Antibody Information

Catalog Number:
87142-2-PBS

Host:
Rabbit

Isotype:
IgG

Purification Method:
Protein A purification

Clone ID:
252329E1

Reactivity:
human

GenBank:
BC009682

Immunogen Catalog Number:
Ag2809

Conjugate:
Unconjugated

Full name:
SMAD family member 5

Gene ID:
4090

Detection Antibody Information

Catalog Number:
87142-1-PBS

Host:
Rabbit

Isotype:
IgG

Purification Method:
Protein A purification

Clone ID:
252329G2

Reactivity:
human

GenBank:
BC009682

Immunogen Catalog Number:
Ag2809

Conjugate:
Unconjugated

Full name:
SMAD family member 5

Gene ID:
4090

Applications

Tested Applications:
Sandwich ELISA

Range:
78.1-5000 pg/mL (Sandwich ELISA)

Recommended Dilutions:
It is recommended that this reagent should be titrated in each testing system to obtain optimal results.

Product Information

MP02940-1 targets SMAD5 in immunoassays as a matched antibody pair. Validated in Sandwich ELISA.

Capture antibody: SMAD5 Recombinant monoclonal antibody, PBS Only (Capture) 87142-2-PBS (252329E1). 100 µg. Concentration 1 mg/mL.

Detection antibody: SMAD5 Recombinant monoclonal antibody, PBS Only (Detector) 87142-1-PBS (252329G2). 100 µg. Concentration 1 mg/mL.

Unconjugated rabbit recombinant monoclonal antibody pair in PBS only storage buffer at a concentration of 1 mg/mL, ready for conjugation. Created using Proteintech's proprietary in-house recombinant technology. Recombinant production enables unrivalled batch-to-batch consistency, easy scale-up, and future security of supply.

Matched antibody pairs are designed for use in a variety of assays and platforms that require matched antibody pairs.

Antibody use should be optimized for each application and assay.

Storage

Storage:
Store at -80°C.

The product is shipped with ice packs. Upon receipt, store it immediately at -80°C

Storage buffer:
PBS only

For technical support and original validation data for this product please contact:

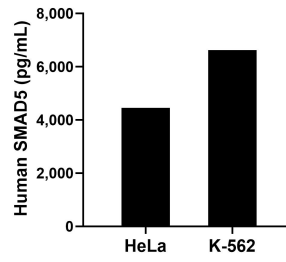
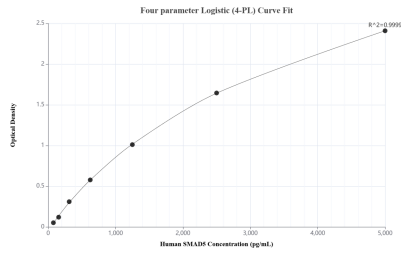
T: 4006900926

E: Proteintech-CN@ptglab.com

W: ptgcn.com

This product is exclusively available under Proteintech Group brand and is not available to purchase from any other manufacturer.

Selected Validation Data



Sandwich ELISA standard curve of MP02940-1, Human SMAD5 Recombinant Matched Antibody Pair - PBS only. 87142-2-PBS was coated to a plate as the capture antibody and incubated with serial dilutions of standard Ag2809. 87142-1-PBS was HRP conjugated as the detection antibody. Range: 78.1-5000 pg/mL

The mean SMAD5 concentration was determined to be 4,453.61 pg/mL in HeLa cell extract based on a 1.2 mg/mL extract load and 6,622.6 pg/mL in K-562 cell extract based on a 1.2 mg/mL extract load.