

For Research Use Only

GDNF Recombinant Matched Antibody Pair, PBS Only



Catalog Number:MP02939-1

Capture Antibody Information

Catalog Number:
83087-4-PBS

Host:
Rabbit

Isotype:
IgG

Purification Method:
Protein A purification

Clone ID:
250395H2

Reactivity:
human

GenBank:
BC069369

Immunogen Catalog Number:
HZ-1311

Conjugate:
Unconjugated

Full name:
glial cell derived neurotrophic factor

Gene ID:
2668

Detection Antibody Information

Catalog Number:
83087-3-PBS

Host:
Rabbit

Isotype:
IgG

Purification Method:
Protein A purification

Clone ID:
250395F9

Reactivity:
human

GenBank:
BC069369

Immunogen Catalog Number:
HZ-1311

Conjugate:
Unconjugated

Full name:
glial cell derived neurotrophic factor

Gene ID:
2668

Applications

Tested Applications:
Sandwich ELISA

Range:
4.88-313 pg/mL (Sandwich ELISA)

Recommended Dilutions:
It is recommended that this reagent should be titrated in each testing system to obtain optimal results.

Product Information

MP02939-1 targets GDNF in immunoassays as a matched antibody pair. Validated in Sandwich ELISA.

Capture antibody: GDNF Recombinant monoclonal antibody, PBS Only (Capture) 83087-4-PBS (250395H2). 100 μ g. Concentration 1 mg/mL.

Detection antibody: GDNF Recombinant monoclonal antibody, PBS Only (Detector) 83087-3-PBS (250395F9). 100 μ g. Concentration 1 mg/mL.

Unconjugated rabbit recombinant monoclonal antibody pair in PBS only storage buffer at a concentration of 1 mg/mL, ready for conjugation. Created using Proteintech's proprietary in-house recombinant technology. Recombinant production enables unrivalled batch-to-batch consistency, easy scale-up, and future security of supply.

Matched antibody pairs are designed for use in a variety of assays and platforms that require matched antibody pairs.

Antibody use should be optimized for each application and assay.

Storage

Storage:

Store at -80°C.

The product is shipped with ice packs. Upon receipt, store it immediately at -80°C

Storage buffer:

PBS only

For technical support and original validation data for this product please contact:

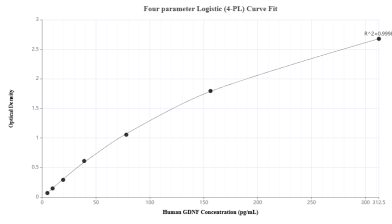
T: 4006900926

E: Proteintech-CN@ptglab.com

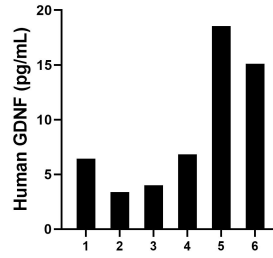
W: ptgcn.com

This product is exclusively available under Proteintech Group brand and is not available to purchase from any other manufacturer.

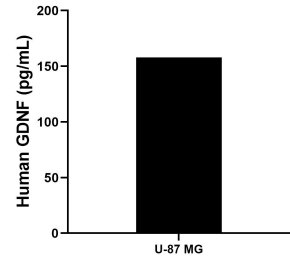
Selected Validation Data



Sandwich ELISA standard curve of MP02939-1, Human GDNF Recombinant Matched Antibody Pair - PBS only. 83087-4-PBS was coated to a plate as the capture antibody and incubated with serial dilutions of standard HZ-1311. 83087-3-PBS was HRP conjugated as the detection antibody. Range: 4.88-313 pg/mL



Plasma of six individual healthy human donors was measured. The human GDNF concentration of detected samples was determined to be 9.1 pg/mL with a range of 3.4-18.5 pg/mL



The mean GDNF concentration was determined to be 158.0 pg/mL in U-87MG cell extract based on a 1.2 mg/mL extract load.