

For Research Use Only

SLC34A3 Recombinant Matched Antibody Pair, PBS Only



Catalog Number:MP02935-1

Capture Antibody Information

Catalog Number:
83139-5-PBS
Host:
Rabbit
Isotype:
IgG
Purification Method:
Protein A purification

Clone ID:
252167D8
Reactivity:
human
GenBank:
NM_001177316.2
Immunogen Catalog Number:
Eg5835

Conjugate:
Unconjugated
Full name:
solute carrier family 34 (sodium phosphate), member 3
Gene ID:
142680

Detection Antibody Information

Catalog Number:
83139-4-PBS
Host:
Rabbit
Isotype:
IgG
Purification Method:
Protein A purification

Clone ID:
252167H6
Reactivity:
human
GenBank:
NM_001177316.2
Immunogen Catalog Number:
Eg5835

Conjugate:
Unconjugated
Full name:
solute carrier family 34 (sodium phosphate), member 3
Gene ID:
142680

Applications

Tested Applications:
Sandwich ELISA

Range:
7.81-500 ng/mL (Sandwich ELISA)

Recommended Dilutions:
It is recommended that this reagent should be titrated in each testing system to obtain optimal results.

Product Information

MP02935-1 targets SLC34A3 in immunoassays as a matched antibody pair. Validated in Sandwich ELISA.

Capture antibody: NPT2C Recombinant monoclonal antibody, PBS Only (Capture) 83139-5-PBS (252167D8). 100 μ g. Concentration 1 mg/mL.

Detection antibody: NPT2C Recombinant monoclonal antibody, PBS Only (Detector) 83139-4-PBS (252167H6). 100 μ g. Concentration 1 mg/mL.

Unconjugated rabbit recombinant monoclonal antibody pair in PBS only storage buffer at a concentration of 1 mg/mL, ready for conjugation. Created using Proteintech's proprietary in-house recombinant technology. Recombinant production enables unrivalled batch-to-batch consistency, easy scale-up, and future security of supply.

Matched antibody pairs are designed for use in a variety of assays and platforms that require matched antibody pairs.

Antibody use should be optimized for each application and assay.

Storage

Storage:
Store at -80°C.
The product is shipped with ice packs. Upon receipt, store it immediately at -80°C
Storage buffer:
PBS only

For technical support and original validation data for this product please contact:

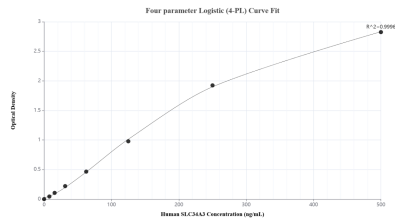
T: 4006900926

E: Proteintech-CN@ptglab.com

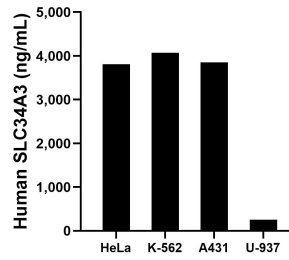
W: ptgcn.com

This product is exclusively available under Proteintech Group brand and is not available to purchase from any other manufacturer.

Selected Validation Data



Sandwich ELISA standard curve of MP02935-1, Human SLC34A3 Recombinant Matched Antibody Pair - PBS only. 83139-5-PBS was coated to a plate as the capture antibody and incubated with serial dilutions of standard Eg5835. 83139-4-PBS was HRP conjugated as the detection antibody. Range: 7.81-500 ng/mL



The mean SLC34A3 concentration was determined to be 3,807.34 ng/mL in HeLa cell extract based on a 1.20 mg/mL extract load, 4,074.78 ng/mL in K-562 cell extract based on a 1.20 mg/mL extract load, 3,855.17 ng/mL in A431 cell extract based on a 1.20 mg/mL extract load and 250.95 ng/mL in U-937 cell extract based on a 2.60 mg/mL extract load.