

For Research Use Only

CAMK2B Recombinant Matched Antibody Pair, PBS Only



Catalog Number:MP02919-1

Capture Antibody Information

Catalog Number:
86858-2-PBS
Host:
Rabbit
Isotype:
IgG
Purification Method:
Protein A purification

Clone ID:
251925E3
Reactivity:
human
GenBank:
BC019070
Immunogen Catalog Number:
Ag2119

Conjugate:
Unconjugated
Full name:
calcium/calmodulin-dependent protein kinase II beta
Gene ID:
816

Detection Antibody Information

Catalog Number:
86858-1-PBS
Host:
Rabbit
Isotype:
IgG
Purification Method:
Protein A purification

Clone ID:
251925D4
Reactivity:
human, mouse, rat
GenBank:
BC019070
Immunogen Catalog Number:
Ag2119

Conjugate:
Unconjugated
Full name:
calcium/calmodulin-dependent protein kinase II beta
Gene ID:
816

Applications

Tested Applications:
Sandwich ELISA

Range:
0.625-20 ng/mL (Sandwich ELISA)

Recommended Dilutions:
It is recommended that this reagent should be titrated in each testing system to obtain optimal results.

Product Information

MP02919-1 targets CAMK2B in immunoassays as a matched antibody pair. Validated in Sandwich ELISA.

Capture antibody: CAMK2B Recombinant monoclonal antibody, PBS Only (Capture) 86858-2-PBS (251925E3). 100 μ g. Concentration 1 mg/mL.

Detection antibody: CAMK2B Recombinant monoclonal antibody, PBS Only (Detector) 86858-1-PBS (251925D4). 100 μ g. Concentration 1 mg/mL.

Unconjugated rabbit recombinant monoclonal antibody pair in PBS only storage buffer at a concentration of 1 mg/mL, ready for conjugation. Created using Proteintech's proprietary in-house recombinant technology. Recombinant production enables unrivalled batch-to-batch consistency, easy scale-up, and future security of supply.

Matched antibody pairs are designed for use in a variety of assays and platforms that require matched antibody pairs.

Antibody use should be optimized for each application and assay.

Storage

Storage:
Store at -80°C.
The product is shipped with ice packs. Upon receipt, store it immediately at -80°C
Storage buffer:
PBS only

For technical support and original validation data for this product please contact:

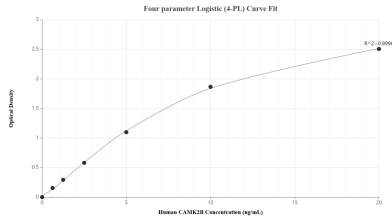
T: 4006900926

E: Proteintech-CN@ptglab.com

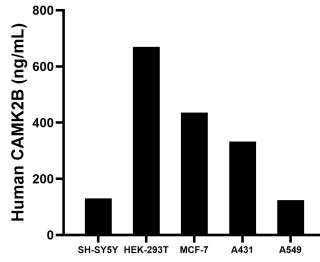
W: ptgcn.com

This product is exclusively available under Proteintech Group brand and is not available to purchase from any other manufacturer.

Selected Validation Data



Sandwich ELISA standard curve of MP02919-1, Human CAMK2B Recombinant Matched Antibody Pair - PBS only. 86858-2-PBS was coated to a plate as the capture antibody and incubated with serial dilutions of standard Ag2119. 86858-1-PBS was HRP conjugated as the detection antibody. Range: 0.625-20 ng/mL.



The mean CAMK2B concentration was determined to be 130.09 ng/mL in SH-SY5Y cell extract based on a 1.20 mg/mL extract load, 669.36 ng/mL in HEK-293T cell extract based on a 1.20 mg/mL extract load, 436.22 ng/mL in MCF-7 cell extract based on a 1.20 mg/mL extract load, 332.36 ng/mL in A431 cell extract based on a 1.20 mg/mL extract load and 124.24 ng/mL in A549 cell extract based on a 1.20 mg/mL extract load.