

For Research Use Only

# MINPP1 Recombinant Matched Antibody Pair, PBS Only



Catalog Number:MP02914-1

## Capture Antibody Information

**Catalog Number:**  
87117-3-PBS  
**Host:**  
Rabbit  
**Isotype:**  
IgG  
**Purification Method:**  
Protein A purification

**Clone ID:**  
252180B3  
**Reactivity:**  
human  
**GenBank:**  
NM\_004897.5  
**Immunogen Catalog Number:**  
Eg6070

**Conjugate:**  
Unconjugated  
**Full name:**  
multiple inositol polyphosphate histidine phosphatase, 1  
**Gene ID:**  
9562

## Detection Antibody Information

**Catalog Number:**  
87117-2-PBS  
**Host:**  
Rabbit  
**Isotype:**  
IgG  
**Purification Method:**  
Protein A purification

**Clone ID:**  
252180H1  
**Reactivity:**  
human  
**GenBank:**  
NM\_004897.5  
**Immunogen Catalog Number:**  
Eg6070

**Conjugate:**  
Unconjugated  
**Full name:**  
multiple inositol polyphosphate histidine phosphatase, 1  
**Gene ID:**  
9562

## Applications

**Tested Applications:**  
Cytometric bead array

**Range:**  
0.312-40 ng/mL (Cytometric Bead Array)

**Recommended Dilutions:**  
It is recommended that this reagent should be titrated in each testing system to obtain optimal results.

## Product Information

MP02914-1 targets MINPP1 in immunoassays as a matched antibody pair. Validated in Cytometric bead array.

Capture antibody: MINPP1 Recombinant monoclonal antibody, PBS Only (Capture) 87117-3-PBS (252180B3). 100 µg. Concentration 1 mg/mL.

Detection antibody: MINPP1 Recombinant monoclonal antibody, PBS Only (Detector) 87117-2-PBS (252180H1). 100 µg. Concentration 1 mg/mL.

Unconjugated rabbit recombinant monoclonal antibody pair in PBS only storage buffer at a concentration of 1 mg/mL, ready for conjugation. Created using Proteintech's proprietary in-house recombinant technology. Recombinant production enables unrivalled batch-to-batch consistency, easy scale-up, and future security of supply.

Matched antibody pairs are designed for use in a variety of assays and platforms that require matched antibody pairs.

Antibody use should be optimized for each application and assay.

## Storage

**Storage:**  
Store at -80°C.  
**The product is shipped with ice packs. Upon receipt, store it immediately at -80°C**  
**Storage buffer:**  
PBS only

For technical support and original validation data for this product please contact:

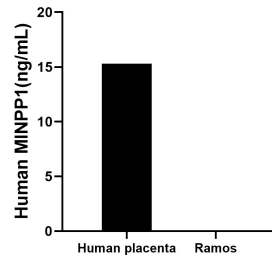
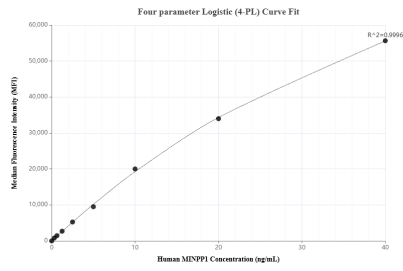
T: 4006900926

E: Proteintech-CN@ptglab.com

W: ptgcn.com

**This product is exclusively available under Proteintech Group brand and is not available to purchase from any other manufacturer.**

## Selected Validation Data



Cytometric bead array standard curve of MPO2914-1, MINPP1 Recombinant Matched Antibody Pair, PBS Only. Capture antibody: 87117-3-PBS. Detection antibody: 87117-2-PBS. Standard: Eg6070. Range: 0.312-40 ng/mL

The mean MINPP1 concentration was determined to be 15.3 ng/mL in human placenta cell extract based on a 3.8 mg/mL extract load, Ramos cell extract were served as a negative control.