

For Research Use Only

MEIS1 Recombinant Matched Antibody Pair, PBS Only



Catalog Number:MP02913-2

Capture Antibody Information

Catalog Number:
87182-5-PBS

Host:
Rabbit

Isotype:
IgG

Purification Method:
Protein A purification

Clone ID:
252471D8

Reactivity:
human

GenBank:
BC043503

Immunogen Catalog Number:
Ag33675

Conjugate:
Unconjugated

Full name:
Meis homeobox 1

Gene ID:
4211

Detection Antibody Information

Catalog Number:
87182-4-PBS

Host:
Rabbit

Isotype:
IgG

Purification Method:
Protein A purification

Clone ID:
252471F8

Reactivity:
human

GenBank:
BC043503

Immunogen Catalog Number:
Ag33675

Conjugate:
Unconjugated

Full name:
Meis homeobox 1

Gene ID:
4211

Applications

Tested Applications:
Sandwich ELISA

Range:
0.313-20 ng/mL (Sandwich ELISA)

Recommended Dilutions:
It is recommended that this reagent should be titrated in each testing system to obtain optimal results.

Product Information

MP02913-2 targets MEIS1 in immunoassays as a matched antibody pair. Validated in Sandwich ELISA.

Capture antibody: MEIS1 Recombinant monoclonal antibody, PBS Only (Capture) 87182-5-PBS (252471D8). 100 μ g. Concentration 1 mg/mL.

Detection antibody: MEIS1 Recombinant monoclonal antibody, PBS Only (Detector) 87182-4-PBS (252471F8). 100 μ g. Concentration 1 mg/mL.

Unconjugated rabbit recombinant monoclonal antibody pair in PBS only storage buffer at a concentration of 1 mg/mL, ready for conjugation. Created using Proteintech's proprietary in-house recombinant technology. Recombinant production enables unrivalled batch-to-batch consistency, easy scale-up, and future security of supply.

Matched antibody pairs are designed for use in a variety of assays and platforms that require matched antibody pairs.

Antibody use should be optimized for each application and assay.

Storage

Storage:

Store at -80°C.

The product is shipped with ice packs. Upon receipt, store it immediately at -80°C

Storage buffer:

PBS only

For technical support and original validation data for this product please contact:

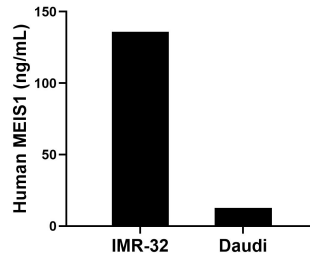
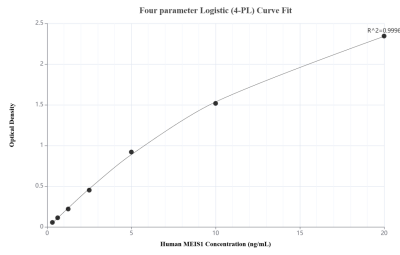
T: 4006900926

E: Proteintech-CN@ptglab.com

W: ptgcn.com

This product is exclusively available under Proteintech Group brand and is not available to purchase from any other manufacturer.

Selected Validation Data



Sandwich ELISA standard curve of MP02913-2, Human MEIS1 Recombinant Matched Antibody Pair - PBS only. 87182-5-PBS was coated to a plate as the capture antibody and incubated with serial dilutions of standard Ag33675. 87182-4-PBS was HRP conjugated as the detection antibody. Range: 0.313-20 ng/mL

The mean MEIS1 concentration was determined to be 136.00 ng/mL in IMR-32 cell extract based on a 1.70 mg/mL extract load and 12.80 ng/mL in Daudi cell extract based on a 1.30 mg/mL extract load.