

For Research Use Only

# Serum Amyloid A Recombinant Matched Antibody Pair, PBS Only



Catalog Number:MP02910-2

## Capture Antibody Information

**Catalog Number:**  
87184-2-PBS  
**Host:**  
Rabbit  
**Isotype:**  
IgG  
**Purification Method:**  
Protein A purification

**Clone ID:**  
251324D4  
**Reactivity:**  
human  
**GenBank:**  
**Immunogen Catalog Number:**  
Eg4687

**Conjugate:**  
Unconjugated  
**Full name:**  
serum amyloid A1  
**Gene ID:**  
6288

## Detection Antibody Information

**Catalog Number:**  
87185-2-PBS  
**Host:**  
Rabbit  
**Isotype:**  
IgG  
**Purification Method:**  
Protein A purification

**Clone ID:**  
251324A4  
**Reactivity:**  
human  
**GenBank:**  
**Immunogen Catalog Number:**  
Eg4687

**Conjugate:**  
Unconjugated  
**Full name:**  
serum amyloid A1  
**Gene ID:**  
6288

## Applications

**Tested Applications:**  
Sandwich ELISA

**Range:**  
78.1-5000 pg/mL (Sandwich ELISA)

**Recommended Dilutions:**  
It is recommended that this reagent should be titrated in each testing system to obtain optimal results.

## Product Information

MP02910-2 targets Serum Amyloid A in immunoassays as a matched antibody pair. Validated in Sandwich ELISA.

Capture antibody: Serum amyloid A-1/SAA1 Recombinant monoclonal antibody, PBS Only (Capture) 87184-2-PBS (251324D4). 100 µg. Concentration 1 mg/mL.

Detection antibody: SAA1+SAA2 Recombinant monoclonal antibody, PBS Only (Detector) 87185-2-PBS (251324A4). 100 µg. Concentration 1 mg/mL.

Unconjugated rabbit recombinant monoclonal antibody pair in PBS only storage buffer at a concentration of 1 mg/mL, ready for conjugation. Created using Proteintech's proprietary in-house recombinant technology. Recombinant production enables unrivalled batch-to-batch consistency, easy scale-up, and future security of supply.

Matched antibody pairs are designed for use in a variety of assays and platforms that require matched antibody pairs.

Antibody use should be optimized for each application and assay.

## Storage

**Storage:**  
Store at -80°C.  
**The product is shipped with ice packs. Upon receipt, store it immediately at -80°C**  
**Storage buffer:**  
PBS only

For technical support and original validation data for this product please contact:

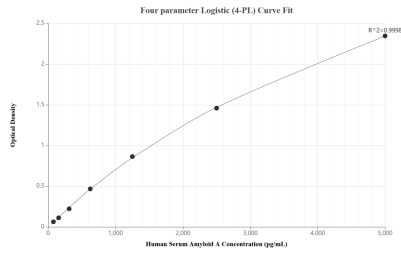
T: 4006900926

E: Proteintech-CN@ptglab.com

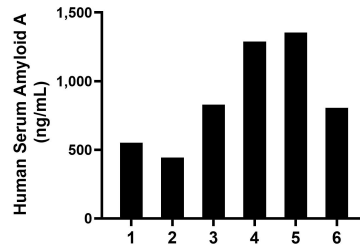
W: ptgcn.com

**This product is exclusively available under Proteintech Group brand and is not available to purchase from any other manufacturer.**

## Selected Validation Data



Sandwich ELISA standard curve of MP02910-2, Human Serum Amyloid A Recombinant Matched Antibody Pair - PBS only. 87184-2-PBS was coated to a plate as the capture antibody and incubated with serial dilutions of standard Eg4687. 87185-2-PBS was HRP conjugated as the detection antibody. Range: 78.1-5000 pg/mL.



Plasma of six individual healthy human donors was measured. The Serum Amyloid A concentration of detected samples was determined to be 878.5 ng/mL with a range of 443.2-1,353.9 ng/mL.