

For Research Use Only

Cadherin-13 Recombinant Matched Antibody Pair, PBS Only



Catalog Number:MP02902-1

Capture Antibody Information

Catalog Number:
87073-4-PBS

Host:
Rabbit

Isotype:
IgG

Purification Method:
Protein A purification

Clone ID:
252245D7

Reactivity:
human

GenBank:
NM_001257.4

Immunogen Catalog Number:
Eg5964

Conjugate:
Unconjugated

Full name:
cadherin 13, H-cadherin (heart)

Gene ID:
1012

Detection Antibody Information

Catalog Number:
87073-3-PBS

Host:
Rabbit

Isotype:
IgG

Purification Method:
Protein A purification

Clone ID:
252245D6

Reactivity:
human

GenBank:
NM_001257.4

Immunogen Catalog Number:
Eg5964

Conjugate:
Unconjugated

Full name:
cadherin 13, H-cadherin (heart)

Gene ID:
1012

Applications

Tested Applications:
Sandwich ELISA

Range:
0.156-10 ng/mL (Sandwich ELISA)

Recommended Dilutions:
It is recommended that this reagent should be titrated in each testing system to obtain optimal results.

Product Information

MP02902-1 targets Cadherin-13 in immunoassays as a matched antibody pair. Validated in Sandwich ELISA.

Capture antibody: CAD13 Recombinant monoclonal antibody, PBS Only (Capture) 87073-4-PBS (252245D7). 100 μ g. Concentration 1 mg/mL.

Detection antibody: CAD13 Recombinant monoclonal antibody, PBS Only (Detector) 87073-3-PBS (252245D6). 100 μ g. Concentration 1 mg/mL.

Unconjugated rabbit recombinant monoclonal antibody pair in PBS only storage buffer at a concentration of 1 mg/mL, ready for conjugation. Created using Proteintech's proprietary in-house recombinant technology. Recombinant production enables unrivalled batch-to-batch consistency, easy scale-up, and future security of supply.

Matched antibody pairs are designed for use in a variety of assays and platforms that require matched antibody pairs.

Antibody use should be optimized for each application and assay.

Storage

Storage:
Store at -80°C.

The product is shipped with ice packs. Upon receipt, store it immediately at -80°C

Storage buffer:
PBS only

For technical support and original validation data for this product please contact:

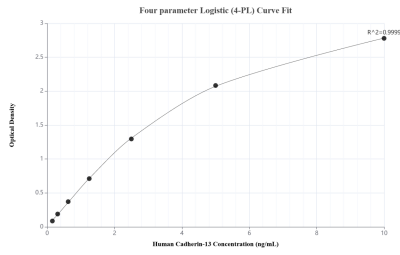
T: 4006900926

E: Proteintech-CN@ptglab.com

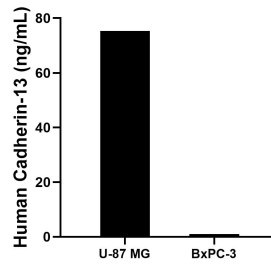
W: ptgcn.com

This product is exclusively available under Proteintech Group brand and is not available to purchase from any other manufacturer.

Selected Validation Data



Sandwich ELISA standard curve of MP02902-1, Human Cadherin-13 Recombinant Matched Antibody Pair - PBS only. 87073-4-PBS was coated to a plate as the capture antibody and incubated with serial dilutions of standard Eg5964. 87073-3-PBS was HRP conjugated as the detection antibody. Range: 0.156-10 ng/mL



The mean Cadherin-13 concentration was determined to be 75.33 ng/mL in U-87MG cell extract based on a 1.50 mg/mL extract load and 1.02 ng/mL in BxPC-3 cell extract based on a 1.20 mg/mL extract load.