

For Research Use Only

Mouse VPS13C Recombinant Matched Antibody Pair, PBS Only



Catalog Number:MP02898-1

Capture Antibody Information

Catalog Number:
87162-3-PBS
Host:
Rabbit
Isotype:
IgG
Purification Method:
Protein A purification

Clone ID:
252231B7
Reactivity:
mouse
GenBank:
NM_177184
Immunogen Catalog Number:
Ag29434

Conjugate:
Unconjugated
Full name:
vacuolar protein sorting 13C (yeast)
Gene ID:
320528

Detection Antibody Information

Catalog Number:
87162-2-PBS
Host:
Rabbit
Isotype:
IgG
Purification Method:
Protein A purification

Clone ID:
252231E9
Reactivity:
mouse
GenBank:
NM_177184
Immunogen Catalog Number:
Ag29434

Conjugate:
Unconjugated
Full name:
vacuolar protein sorting 13C (yeast)
Gene ID:
320528

Applications

Tested Applications:
Sandwich ELISA

Range:
0.313-20 ng/mL (Sandwich ELISA)

Recommended Dilutions:
It is recommended that this reagent should be titrated in each testing system to obtain optimal results.

Product Information

MP02898-1 targets VPS13C in immunoassays as a matched antibody pair. Validated in Sandwich ELISA.

Capture antibody: Mouse VPS13C Recombinant monoclonal antibody, PBS Only (Capture) 87162-3-PBS (252231B7). 100 µg. Concentration 1 mg/mL.

Detection antibody: Mouse VPS13C Recombinant monoclonal antibody, PBS Only (Detector) 87162-2-PBS (252231E9). 100 µg. Concentration 1 mg/mL.

Unconjugated rabbit recombinant monoclonal antibody pair in PBS only storage buffer at a concentration of 1 mg/mL, ready for conjugation. Created using Proteintech's proprietary in-house recombinant technology. Recombinant production enables unrivalled batch-to-batch consistency, easy scale-up, and future security of supply.

Matched antibody pairs are designed for use in a variety of assays and platforms that require matched antibody pairs.

Antibody use should be optimized for each application and assay.

Storage

Storage:
Store at -80°C.
The product is shipped with ice packs. Upon receipt, store it immediately at -80°C
Storage buffer:
PBS only

For technical support and original validation data for this product please contact:

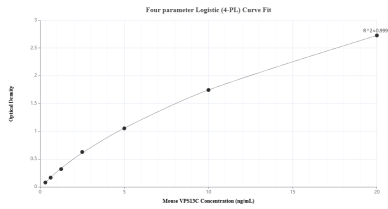
T: 4006900926

E: Proteintech-CN@ptglab.com

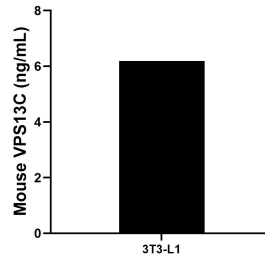
W: ptgcn.com

This product is exclusively available under Proteintech Group brand and is not available to purchase from any other manufacturer.

Selected Validation Data



Sandwich ELISA standard curve of MP02898-1, Mouse VPS13C Recombinant Matched Antibody Pair - PBS only. 87162-3-PBS was coated to a plate as the capture antibody and incubated with serial dilutions of standard Ag29434. 87162-2-PBS was HRP conjugated as the detection antibody. Range: 0.313-20 ng/mL



The mean VPS13C concentration was determined to be 6.19 ng/mL in 3T3-L1 cell extract based on a 1.3 mg/mL extract load.