

For Research Use Only



IL-17RC Recombinant Matched Antibody Pair, PBS Only

Catalog Number:MP02890-1

Capture Antibody Information

Catalog Number: 87116-3-PBS	Clone ID: 250674E3	Conjugate: Unconjugated
Host: Rabbit	Reactivity: human	Full name: interleukin 17 receptor C
Isotype: IgG	GenBank: N/A	Gene ID: 84818
Purification Method: Protein A purification	Immunogen Catalog Number: Eg2835	

Detection Antibody Information

Catalog Number: 87116-2-PBS	Clone ID: 250674H8	Conjugate: Unconjugated
Host: Rabbit	Reactivity: human	Full name: interleukin 17 receptor C
Isotype: IgG	GenBank: N/A	Gene ID: 84818
Purification Method: Protein A purification	Immunogen Catalog Number: Eg2835	

Applications

Tested Applications: Sandwich ELISA	Range: 0.625-20 ng/mL (Sandwich ELISA)	Recommended Dilutions: It is recommended that this reagent should be titrated in each testing system to obtain optimal results.
---	--	---

Product Information

MP02890-1 targets IL-17RC in immunoassays as a matched antibody pair. Validated in Sandwich ELISA.

Capture antibody: IL17RC Recombinant monoclonal antibody, PBS Only (Capture) 87116-3-PBS (250674E3). 100 µg. Concentration 1 mg/mL.

Detection antibody: IL17RC Recombinant monoclonal antibody, PBS Only (Detector) 87116-2-PBS (250674H8). 100 µg. Concentration 1 mg/mL.

Unconjugated rabbit recombinant monoclonal antibody pair in PBS only storage buffer at a concentration of 1 mg/mL, ready for conjugation. Created using Proteintech's proprietary in-house recombinant technology. Recombinant production enables unrivalled batch-to-batch consistency, easy scale-up, and future security of supply.

Matched antibody pairs are designed for use in a variety of assays and platforms that require matched antibody pairs.

Antibody use should be optimized for each application and assay.

Storage

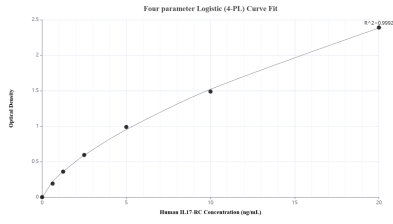
Storage:
Store at -80°C.
The product is shipped with ice packs. Upon receipt, store it immediately at -80°C

Storage buffer:
PBS only

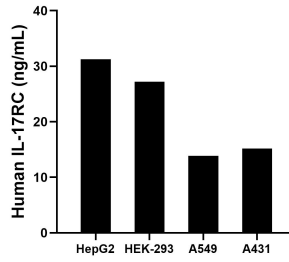
For technical support and original validation data for this product please contact:
T: 4006900926 E: Proteintech-CN@ptglab.com W: ptgcn.com

This product is exclusively available under Proteintech Group brand and is not available to purchase from any other manufacturer.

Selected Validation Data



Sandwich ELISA standard curve of MP02890-1, Human IL-17RC Recombinant Matched Antibody Pair - PBS only. 87116-3-PBS was coated to a plate as the capture antibody and incubated with serial dilutions of standard Eg2835. 87116-2-PBS was HRP conjugated as the detection antibody. Range: 0.625-20 ng/mL.



The mean IL-17RC concentration was determined to be 31.26 ng/mL in HepG2 cell extract based on a 1.20 mg/mL extract load, 27.24 ng/mL in HEK-293 cell extract based on a 1.20 mg/mL extract load, 13.84 ng/mL in A549 cell extract based on a 1.10 mg/mL extract load and 15.16 ng/mL in A431 cell extract based on a 1.20 mg/mL extract load.