

For Research Use Only

SERPINA7/TBG Recombinant Matched Antibody Pair, PBS Only



Catalog Number:MP02888-1

Capture Antibody Information

Catalog Number:
86893-3-PBS

Host:
Rabbit

Isotype:
IgG

Purification Method:
Protein A purification

Clone ID:
251961D3

Reactivity:
human

GenBank:
NM_000354.5

Immunogen Catalog Number:
Eg3062

Conjugate:
Unconjugated

Full name:
serpin peptidase inhibitor, clade A (alpha-1 antiproteinase, antitrypsin), member 7

Gene ID:
6906

Detection Antibody Information

Catalog Number:
86893-2-PBS

Host:
Rabbit

Isotype:
IgG

Purification Method:
Protein A purification

Clone ID:
251961C9

Reactivity:
human

GenBank:
NM_000354.5

Immunogen Catalog Number:
Eg3062

Conjugate:
Unconjugated

Full name:
serpin peptidase inhibitor, clade A (alpha-1 antiproteinase, antitrypsin), member 7

Gene ID:
6906

Applications

Tested Applications:
Sandwich ELISA

Range:
78.1-5000 pg/mL (Sandwich ELISA)

Recommended Dilutions:
It is recommended that this reagent should be titrated in each testing system to obtain optimal results.

Product Information

MP02888-1 targets SERPINA7/TBG in immunoassays as a matched antibody pair. Validated in Sandwich ELISA.

Capture antibody: SERPINA7 Recombinant monoclonal antibody, PBS Only (Capture) 86893-3-PBS (251961D3). 100 μ g. Concentration 1 mg/mL.

Detection antibody: SERPINA7 Recombinant monoclonal antibody, PBS Only (Detector) 86893-2-PBS (251961C9). 100 μ g. Concentration 1 mg/mL.

Unconjugated rabbit recombinant monoclonal antibody pair in PBS only storage buffer at a concentration of 1 mg/mL, ready for conjugation. Created using Proteintech's proprietary in-house recombinant technology. Recombinant production enables unrivalled batch-to-batch consistency, easy scale-up, and future security of supply.

Matched antibody pairs are designed for use in a variety of assays and platforms that require matched antibody pairs.

Antibody use should be optimized for each application and assay.

Storage

Storage:
Store at -80°C.

The product is shipped with ice packs. Upon receipt, store it immediately at -80°C

Storage buffer:
PBS only

For technical support and original validation data for this product please contact:

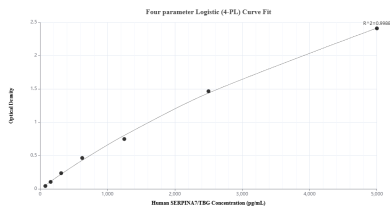
T: 4006900926

E: Proteintech-CN@ptglab.com

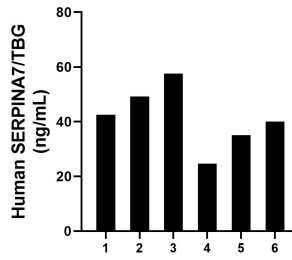
W: ptgcn.com

This product is exclusively available under Proteintech Group brand and is not available to purchase from any other manufacturer.

Selected Validation Data



Sandwich ELISA standard curve of MP02888-1, Human SERPINA7/TBG Recombinant Matched Antibody Pair - PBS only. 86893-3-PBS was coated to a plate as the capture antibody and incubated with serial dilutions of standard Eg3062. 86893-2-PBS was HRP conjugated as the detection antibody. Range: 78.1-5000 pg/mL



Plasma of six individual healthy human donors was measured. The human SERPINA7/TBG concentration of detected samples was determined to be 41.52 ng/mL with a range of 24.73 - 57.60 ng/mL.